



SY200H

Classic Succession Value Leader

QUALITY **NEW**
CHANGES THE WORLD



PRODUCT HIGHLIGHTS

● Custom Isuzu 4HK1 engine

Engine power is 133kW/2000rpm, more powerful, DLC coated injector and SUS316 material EGR valve rod have better adaptability for inferior fuel .

● Longer undercarriage

With 3.446m track length on ground which increased by 3%, the stability is improved.

● Filtration performance improvement

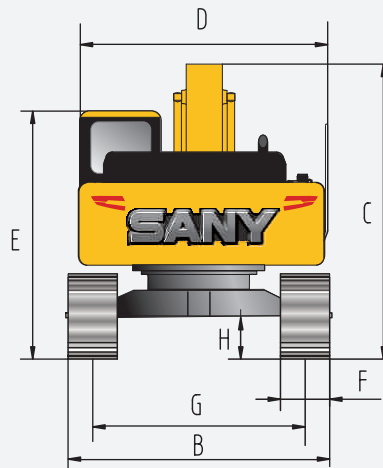
Adopt mine-level filtration system, three layers of coarse filtration, improve the precision of fine filtration, "large multi-stage filtration system" makes better fuel adaptability.

● Automotive intelligent cab

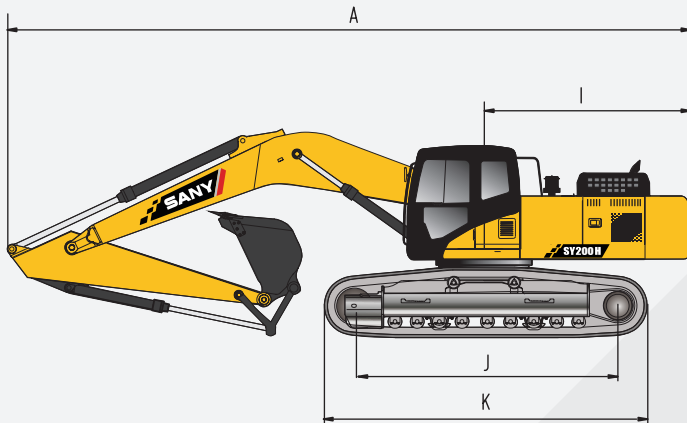
The performance of new cab has been greatly improvements in intelligence, comfort, reliability and other aspects, which provide the user better driving feeling.

Overall dimensions (mm)

SY200H



A. Overall length (in transportation state)	9680
B. Overall width	2800
C. Overall height (in transportation state)	3440
D. Machine cab width	2870
E. Overall height (to top of cab)	3075
F. Shoe width	600
G. Track gauge	2200
H. Minimum ground clearance	440
I. Distance, swing center to rear end	2900
J. Track length on ground	3360
K. Track length	4160



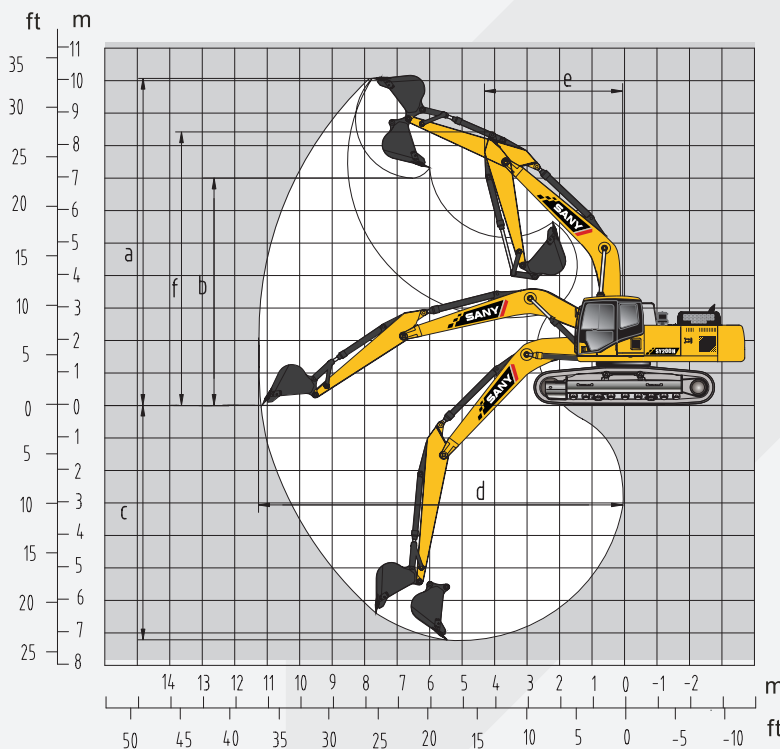
Technical specifications

SY200H

Operation Weight	21500kg
Bucket capacity	0.8~1.0(1.0)m ³
Rate power	133kW/2000 rpm
Traveling speed (high/low)	5.4/3.4 km/h
Swing speed	11 rpm
Gradeability	70%/35°
Ground pressure	47.4kPa
Digging force of bucket	138kN
Digging force of arm	103kN

Operating range (mm)

SY200H



a. Maximum digging height	9600
b. Maximum unloading height	6730
c. Maximum digging depth	6600
d. Maximum digging distance	10280
e. Minimum slewing radius	3730
f. Maximum height at minimum slewing radius	7680

SANY Heavy Machinery Co., Ltd.

SANY Industrial Park, Dongcheng Avenue, Kunshan Economic & Technological Development Zone, Jiangsu Province
 Post code: 215300
 After-sales service hotline: 4008-28-2318
 Consulting & complaint hotline: 4008-87-9318
 Website: <http://www.sanygroup.com>



Note

The documents and technical specification will be changed without further notice due to continuous technical improvement. The machine in the picture might include additional equipment.

ZJSYX0604CH (March 2020)

Printed in CHINA