



Address: SANY Industry Town, Economic and Technological Development Zone, Changsha, Hunan China
Zip code: 410100
Website: <http://www.sanygroup.com.cn>
Sales Hotline
Tel: 0086-731-85835199 Mail: sales@sanyglobal.com
Service or Complaints
Tel: 0086-4006098318 Mail: CRD@sany.com.cn

In case of product configuration (including technical parameters) change without prior notice, please refer to the actual product received.
The copyright belongs to Sany Heavy Industry. Without written permission of Sany Heavy Industry, the contents of any part of this catalog may not be reproduced or copied for any purpose.
Sany Heavy Industry Engineering Vehicle Overseas Products Institute May 2023
© Registered trademark, counterfeit will be prosecuted. Copyright 2015 Sany Heavy Industry Co., LTD. All rights reserved.
SANY and the SANY logo are trademarks or registered trademarks of Sany Heavy Industry Co., LTD worldwide and may not be used without written approval of the Company.



PLEASE SUBSCRIBE TO
OUR WECHAT CHANNEL



DUMP TRUCK



QUALITY CHANGES THE WORLD

SANY INTRODUCTION

SANY was founded in 1989;

Group assets: **\$28** billion;

Construction machinery manufacturing rank;

CHINA **NO.1** and WORLD **NO.2**;

3 Listed companies in the group;

10,146 international authorized patents, **13,140** patent applications, and **219** breakthrough key technologies;

More than **54000** employees all around the world.

DUMP TRUCK OF SANY ENGINEERING VEHICLE INSTITUTE

Sany started the international tipper business in 2018, and the international sales volume reached 1,868 units in 2022, which is the fastest growth rate in the industry.

SANY HONOR



WORLDWIDE TOP SUPPLIERS

Set high requirements on suppliers and expect to provide high quality products and services.



THE RIGHT TRUCK FOR THE RIGHT APPLICATION

For different scenarios such as urban construction and mining, we provide a wide variety of configurations to perfectly match our customers' various requirements.

Engine: 340-490hp, Euro2/3/5

Transmission: 10/12 gears, MT/AMT

Rear axle: i= 4.77/5.26/5.92/6.73

Main frame: 316x90 x(8+8) / (8+8+4)

Suspension Front: 11/13 tons

Suspension Rear: 22/26 tons

Body: City/Mine; U/Rectangle;

GVW: 55-78tons

URBAN
TRANSPORTATION

ROAD
CONSTRUCTION

PITHEAD
TRANSPORTATION

STRIP
MINING



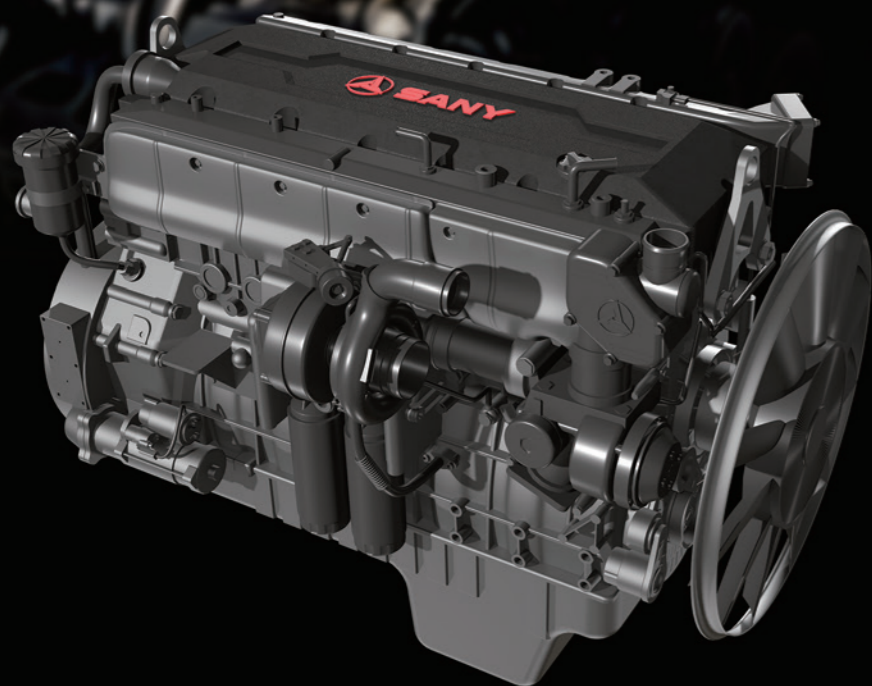
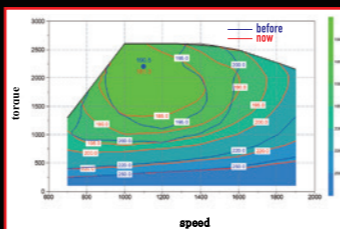
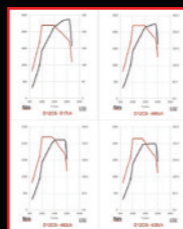
FOCUS ON CUSTOMER PROFITABILITY

INCOME EXTRA 10%

- Horse power range covers **380~490HP**, maximum torque **2200N·m**, strong climb ability, travel fast, more economical;
- Power upgrade, great unstuck capability and gradeability, overloading without worries;
- Simulation calculation and road spectrum acquisition improves vehicle performance.

COST SAVINGS UP TO 10%

- **Double vortex combustion chamber**: reduce fuel consumption;
- **Optimized CAM axis**: the camshaft profile design with intake valve closing early and exhaust valve opening early achieve the trade-off between optimal fuel consumption and emission;
- **Economic zone speed**: expand **400** to save fuel;
- **Active breathing system, oil and gas separator**: free of maintenance;
- **High transmission efficiency**: optimal matching, to ensure that the actual conditions of the customer vehicle commonly used speed in the economic range.



ROBUST DESIGN

Sany takes into full consideration of the possible tough work condition in harsh environment of the dump trucks, assures the reliability of the product through rigorous testing, super load bearing capacity design, and keeps the vehicle in good working state at all times.

TOUGH ROAD TEST

- **15,000KM** strict full load test on intensive road at SANY vehicle testing site.
- Over **3000km** cold area test and over **10,000km** extremely tough test in Baokang dump truck test site with full load.

HIGH STRENGTH SUSPENSION SYSTEM

- **316mm** height and 8mm+8mm thickness chassis frame, stronger than competitors;
- 9 tons front axle (capacity **12T**) + **2×16T** rear axle (capacity **2×22T**), reliable carrying capacity;
- 10 leaf springs front suspension system and **12** leaf springs rear suspension system. GVW ranges from **55** tonnes to **78** tonnes. Increase payload with **20%**.

COMPREHENSIVE PROTECTION SYSTEM

- Equipped with radiator protection, oil pan protection plate, headlight and taillight shield.

TRANSMISSION TORQUE REDUNDANCY (20% UP) TO IMPROVE ANTI-ROUGHNESS



COLD REGION TEST



ROUGH ROAD



HEAVY-LOAD UP&DOWN HILL



WADING TEST



SPRAY WATER RESISTANCE TEST



OUTSTANDING CROSSING ABILITY

OFFROAD WORKING OPTIMIZATION, STRONGER TRAFFICABILITY PERFORMANCE

- Approach angle $\geq 26^\circ$, departure angle $\geq 34^\circ$, minimum ground clearance $\geq 300\text{mm}$, chassis core components such as fuel tank, air storage, air filter height $\geq 550\text{mm}$, radiator $\geq 650\text{mm}$.
- Optional **12.00 R24** tires, higher ground clearance, better passability.
- Well protection of chassis components assures the safety under off road working condition, smaller turning radius, ensures crossing in small space.

UNSTUCK CAPABILITY FOR COMPLICATED GROUND

- Standard with wheel differential lock, axial differential lock, Hub-reduction driving axle;
- Optional: Acceleration Slip Regulation (**ASR**) system, improve the drive performance of slippery road conditions.



COMFORTABLE DRIVING

Through ergonomic optimization design, it is convenient for the driver to operate.

- Multifunctional steering wheel
- Cruise (above Euro III)-optional
- LCD screen -optional
- Electric window lifts
- Electric rearview mirror -optional
- Air suspension seat
- Sleeper and storage space
- Air conditioning/independent heater(optional for cold area)
- Pneumatic Gear Shift Assistance



SAFETY FIRST

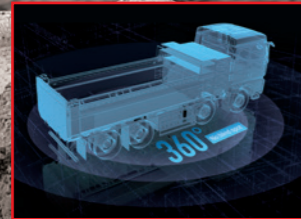
Efficient braking system and safety assistance, to ensure the safe operation of drivers and vehicles.

RELIABLE BRAKING SYSTEM

- Rated pressure **12bar**;
- **KNORR** parts;
- Match **engine braking** technology for Euro 3 and above models;
- **Bimetal** brake drum.

DRIVING SAFETY

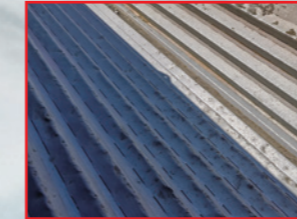
- No dead Angle view mirror, optional **360°** view
- Standard with **ABS**
- Optional **ASR**
- Optional **LDWS/FCWS**
- Optional **TPS/BAWS**



RELIABLE AND DURABLE SUPERSTRUCTURE

Chassis mounted integration, a variety of container specifications, suitable for different working conditions.

- City construction and mining applications
- A wide selection of materials and thicknesses
- Special superstructure for large stones
- U shape/rectangle
- Four flip/six flip lift is stable and reliable
- Straight tail door/diagonal tail door
- Long life: high strength materials/robot welding/powder spraying technology



INDONESIA

STRONG POWER AND BETTER DRIVE EXPERIENCE

Higher horse power engine ranges from 380 to 430 horse power, higher efficiency powertrain with strong load capability gives you confidence to overcome tough work conditions everywhere. Comfortable 318 cabin offers better experience for drivers.

ROBUST DESIGN WITH HIGH DURABILITY IN HARSH ENVIRONMENT

Outstanding adaptability ensures stable operation under harsh working conditions in mining area. Reinforced 316mm height, 8mm+8mm thickness chassis frame offers outstanding durability. Sufficient tests and scientific simulations ensure reliability and trustworthy quality.

INTELLIGENT AND SAFETY

MachineLink+ Terminal allows operators to monitor truck's state and location in real time. This helps operators to improve drive habit in order to reduce fuel consumption. The truck's GPS location can be tracked by managers, which helps to trace the truck's journey or set geofence. Result in safe operation of the trucks.



Indonesia series dump truck model configuration and working conditions recommended 2023-5				
type		SYZ324C-8W (R)		SYZ324C-8Y (R)
		Nickel ore transportation		
		Standard Model Direct transmission i=5.92		Standard Model Direct transmission i=5.92
		ZZX100000379		ZZX100000359
Vehicle parameters	Dimension (LxWxH)mm	8800x2540x3540		8800x2540x3540
	Wheel base mm	4000+1400		4000+1400
	Curb Weight	16.2t		16.2t
	Full Load Weight	55t		55t
	Economic speed range	41-55		37-51
	Rated maximum speed	75		75
Cargo	Permissible maximum speed	88		77
	24m³ (5800*2300*1800mm)	●		●
	20m³ (5800*2300*1500mm)	X		X
Cargo	31m³ (6200*2500*2000mm)	X		X
	Rectangular	X		X
	U-Type	●		●
	Flat floor	●		●
	Upward floor	○		○
	Tail door	●		●
Cab	No tail door	X		X
	Cab Model	318 Lengthened flat roof		
	Door lock and window	Remote key, central lock, electric glass lifting		
Cab	Other configuration	Single sleeper, wraparound instrument table, air conditioner, radio (with Bluetooth, USB and SD card interface, can connect with mobile phone to make calls, play music), sun visor, 2kg fire extinguisher, three steps (third level activity)		
	Engine	Model	WP10.380E32, Euro II, 9.726	YC6MK400-33, Euro II, 10.338
		Rated power/speed (kW/rpm)	280/2200	
Maximum torque/speed (N.m/rpm)		1460/1200-1600		1800/1100-1500
Chassis parameters	Clutch	φ 430		
	Transmission	12JSD200T-B (Fast), Ratio 15.53-1		
	Front axle	Type	9.5T (HANDE)	
		Others	waterproof axle	
	Drive axle	Type	16T (HANDE) i=5.92	
		Differential lock	Differential lock between wheels and shafts	
		Others	waterproof axle	
	Tyre	12.00R20 PR22 Mine tyre		12.00R20 PR18 Mine tyre
	Frame	940-860x316x(8+8)		
	front suspension	10 leaves (width 80mm, thickness 18mm multiple-leaf spring+ shock absorber)		
	rear suspension	12 leaves (width 90mm, thickness 28mm+25mm multiple-leaf spring+Four horse integrated balance shaft)		
	Breaking	Pneumatic double circuit drum brake		
Fuel tank	300L (aluminum)			
Battery	Low temperature 165Ah			
Optional	Tree Root IoT Terminal	●		●
	12.00R20 PR22 Mine tyre	●		○
	Intercooler protection	●		●
	Headlight and side light guard mesh	●		●
		Typical scene: No-urban road/Nickel ore transportation Typical road: unpaved, pothole/soft/compact-dominated, paved road with small proportion, no turning radius restriction. GVW: ≤55t General used speed: Full load 10-30km/h (off highway) Empty load 20-40km/h (off highway) Maximum speed: no typical demand, ≤70km/h		

Note: X- does not adopt; ○ - Optional (Class C orders); ● - Standard; The above configuration parameters are for reference. The manufacturer reserves the right to change them without prior notice. The right to interpret them is reserved by the manufacturer

Indonesia series dump truck model configuration and working conditions recommended 2023-5				
type		SYZ320C-8W (R)		SYZ331C-8W (R)
		Mine stripping transportation		
		Standard Model Direct transmission i=5.92		Standard Model Direct transmission i=5.92
		ZZX100000440		ZZX100000377
Vehicle parameters	Dimension (LxWxH)mm	8800x2540x3580		9150x2690x3680
	Wheel base mm	4200+1400		4200+1400
	Curb Weight	16.2t		16.5t
	Full Load Weight	65t		65t
	Economic speed range	34-48		34-48
	Rated maximum speed	65		65
Cargo	Permissible maximum speed	75		75
	24m³ (5800*2300*1800mm)	X		X
	20m³ (5800*2300*1500mm)	●		●
Cargo	31m³ (6200*2500*2000mm)	X		●
	Rectangular	X		●
	U-Type	●		X
	Flat floor	●		●
	Upward floor	X		X
	Tail door	X		●
Cab	No tail door	●		X
	Cab Model	318 Lengthened flat roof		
	Door lock and window	Remote key, central lock, electric glass lifting		
Cab	Other configuration	Single sleeper, wraparound instrument table, air conditioner, radio (with Bluetooth, USB and SD card interface, can connect with mobile phone to make calls, play music), sun visor, 2kg fire extinguisher, three steps (third level activity)		
	Engine	Model	WP12.430E201, Euro II, 11.596	
		Rated power/speed (kW/rpm)	316/1900	
Maximum torque/speed (N.m/rpm)		2000/1000-1400		
Chassis parameters	Clutch	φ 430		
	Transmission	12JSDX240T (Fast), Ratio 13.15-1		
	Front axle	Type	9T (SANHUAN)	
		Others	waterproof axle	
	Drive axle	Type	16T (BEIBEN) i=5.92	
		Differential lock	Differential lock between wheels and shafts	
		Others	waterproof axle	
	Tyre	12.00R20 PR18 Mine tyre		12.00R20 PR18 Mine tyre
	Frame	940-860x316x(8+8)		
	front suspension	10 pieces (width 90mm, thickness 20mm multi-piece spring + shock absorber)		
	rear suspension	12 pieces (width 90mm, thickness 30mm+28mm multi-spring + four-horse integrated balance shaft)		
	Breaking	Pneumatic double circuit drum brake		
Fuel tank	400L (aluminum)			
Battery	Low temperature 165Ah			
Optional	Tree Root IoT Terminal	●		●
	12.00R20 PR22 Mine tyre	○		○
	Intercooler protection	●		●
	Headlight and side light guard mesh	●		●
		Typical scene: No-urban road/Mine stripping transportation Typical road: unpaved, pothole/soft/compact-dominated, paved road with small proportion, no turning radius restriction. GVW: ≤65t General used speed: Full load 10-30km/h (off highway) Empty load 20-40km/h (off highway) Maximum speed: no typical demand, ≤70km/h		

Note: X- does not adopt; ○ - Optional (Class C orders); ● - Standard; The above configuration parameters are for reference. The manufacturer reserves the right to change them without prior notice. The right to interpret them is reserved by the manufacturer

Indonesia series dump truck model configuration and working conditions recommended 2023-5				
type		SYZ440C-8W(R)	SYZ434C-8W (R)	
		Coal transportation	Nickel ore transportation	
		Standard Model	Standard Model	
		Direct transmission i=5.92	Direct transmission i=5.92	
		ZZX100000376	ZZX100000442	
Vehicle parameters	Dimension (LxWxH)(mm)	11600x2540x3680	11000x2540x3680	
	Wheel base mm	2000+4600+1400	2000+4200+1400	
	Curb Weight	20t	20t	
	Full Load Weight	78t	78t	
	Economic speed range	34-48	34-48	
	Rated maximum speed	65	65	
	Permissible maximum speed	75	75	
Cargo	34m³ (8000*2350*1800mm)	X	●	
Cargo	40m³ (8600*2350*2000mm)	●	X	
Cargo	Rectangular	●	●	
	U-Type	X	X	
	Flat floor	●	●	
	Upward floor	X	X	
	Tail door	●	●	
	No tail door	X	X	
Cab	Cab Model	318 Lengthened flat roof		
	Door lock and window	Remote key, central lock, electric glass lifting		
	Other configuration	Single sleeper, wraparound instrument table, air conditioner, radio (with Bluetooth), USB and SD card interface, can connect with mobile phone to make calls, play music), sun visor, 2kg fire extinguisher, three steps (third level activity)		
Chassis parameters	Engine	Model	WP12.430E201, Euro II , 11.596	
		Rated power/speed (kW/rpm)	316/1900	
		Maximum torque/speed (N.m/rpm)	2000/1000-1400	
	Clutch	φ 430		
	Transmission	Type	12JSDX240T (Fast) ,Ratio 13.15-1	
		Others	9.5T (HANDE)	
		Others	Self-adjusting arm, waterproof axle	
	Front axle	Type	16T (HANDE) i=5.92	
		Others	Differential lock between wheels and shafts	
		Others	Self-adjusting arm, waterproof axle	
	Drive axle	Type	12.00R20 PR18 Mine tyre	
		Others	940-860x316x(8+8)	
		Others	10 pieces (width 90mm, thickness 20mm multi-piece spring + shock absorber)	
	front suspension	12 pieces (width 90mm, thickness 30mm+28mm multi-spring + four-horse integrated balance shaft)		
	rear suspension	Pneumatic double circuit drum brake		
	Breaking	400L (aluminum)		
	Fuel tank	Low temperature 165Ah		
Battery				
Optional	Tree Root IoT Terminal	●	●	
	12.00R20 PR22 Mine tyre	○	○	
	Intercooler protection	●	●	
	Headlight and side light guard mesh	●	●	
		Typical scene: No-urban road-coal transportation Typical road: unpaved, pothole/soft/compact-dominated, paved road with small proportion, no turning radius restriction. GVW: ≤78t General used speed: Full load 10-20km/h (off highway) Empty load 20-30km/h (off highway) Maximum speed: no typical demand, or ≤70km/h	Typical scene: No-urban road/Nickel ore transportation Typical road: unpaved, pothole/soft/compact-dominated, paved road with small proportion, no turning radius restriction. GVW: ≤78t General used speed: Full load 10-20km/h (off highway) Empty load 20-30km/h (off highway) Maximum speed: no typical demand, or ≤70km/h	

Note: X- does not adopt; ○ - Optional (Class C orders); ● - Standard; The above configuration parameters are for reference. The manufacturer reserves the right to change them without prior notice. The right to interpret them is reserved by the manufacturer

VIETNAM

LIGHT WEIGHT DESIGN

The chassis with strong innovated steel is designed 5% lighter than its competitors, which makes the truck carry extra load for each trip and helps the customer to gain extra profit.

HIGH QUALITY

With the ergonomic design of SANY 318 cab, it is comfortable, intelligent, and easy to drive. The cab meets the European standard regulation that requires a robust cabin structure.

LOWER FUEL CONSUMPTION

SANY Deutz D09 Engine with German quality, high horsepower, and high torque, its fuel consumption is 10% lower than its competitors. Thus, the SYZ414 also provides its customer higher profit and shorter payback cycle.



Vietnam SYZ414				
Product Model		SYZ414C-BS(V)		
		Standard Model		
		ZZX100000466		
Vehicle Parameters	Dimension (LxWxH)(mm)		9300x2500x3450	
	Wheel Base(mm)		2000+2800+1400	
	Curb Weight(kg)		14.5t	
	Full Load Weight(kg)		50t	
	Economic Speed Range (Maximum Gear)		37-58	
	Permissible Maximum Speed-2200rpm		80	
Truck Body	14m³		●	
	Rectangle Cargo		○	
	U type Cargo		●	
Cabin	Type		318 Standard Roof with Single Sleeper	
	Other		Single sleeper, wraparound instrument table, air conditioner, radio (with Bluetooth, USB and SD card interface, can connect with mobile phone to make calls, play music), sun visor, 2kg fire extinguisher, three steps (third level activity)	
Chassis Parameter	Engine	Type	D09C5-380E3, Euro V , 8.7L	
		Rated Power(kW/rpm)	280/1900	
		Maximum Torque (N.m/rpm)	1700/1100-1500	
	Clutch	type		φ 430
		Transmission		Type
	Front Axle	Differential Ratio		12.10 - 0.78
		Type		7.5T
	Middle and Rear Axle	Other		ABS, waterproof axle
		Type		13T
		Differential Ratio		5.73
	Tires	Differential Lock		●
		Size		12.00R20
	Frame		940-860x300x(8+4)	
	Front Suspension		8 Leaf Springs	
	Rear Suspension		10 Leaf Springs	
	Braking	Type	Pneumatic double circuit, front and rear drum type,ABS	
	Fuel Tank	Volume	400L (Aluminum)	
Battery	Capacity	165Ah		
Optional	Headlamp and Taillights Protection		○	
	Chassis Tool Box		○	
Applicable Scenarial (Recommend)		Typical Scene: Urban Construction, Suburban Transfer Typical Road: Paved Road, Highway, Minimal Turning Radii Limitation Designed Gross Vehicle Weight: ≤50t Regular Speed: Full Load 50-80km/h (Highway) Empty Load: 60-90km/h (Highway) Maximum Speed: Usually ≤100km/h		

Note: X- does not adopt; ○ - Optional (Class C orders); ● - Standard; The above configuration parameters are for reference. The manufacturer reserves the right to change them without prior notice. The right to interpret them is reserved by the manufacturer

RUSSIA

STRONG POWER AND FAST CLIMBING SPEED

460 horsepower , great climbing ability in highway and mine transportation application. Extra trip every day for better profit.

MORE LOADING. MORE DURABLE

9.5T front axle, 16T rear axle, 316 height, 8 + 8 double layer frame, T55 balance suspension, four turn stronger bearing capacity, high strength wear resistant steel. The tail gate is also strengthened for better superstructure.

EXTREMELY SAFE AND SECURE

Reliability test is carried out in various working conditions, which ensures the normal operation of vehicles for a long life cycle. Cold area package configuration ensures more reliable operation under low temperature environment. Metal frame structure and white body guarantees personal safety.



Russia Dumper configuration and work condition recommendation 6x4					
Product Model		SYZ320C-85(V) (Main Selling)-Deutz Engine			
		Standard Model Direct transmission i=5.26	Luxury Model Direct transmission i=5.26		
		ZZX20000271	ZZX10000474		
Vehicle parameter	Dimension (LxWxH)(mm)	8800x2540x3580			
	Wheel Base(mm)	4000+1400			
	Curb Weight(kg)	16500			
	Full Load Weight(kg)	55000-65000			
	Economic Speed Range (Maximum Gear)	37-58			
	Rated Maximum Speed-1900rpm	71			
Permissible Maximum Speed-2200rpm	82				
Body	20m³ (5800*2350*1500mm)	●	●		
	27m³ (5800*2350*2000mm)	○	○		
	Rectangle Cargo	●	●		
	U type Cargo	○	○		
Cab	Cab Model	318 cab, Standard Roof with single bed			
	Others	Remote Key, Central Lock, Electric Glass Lifting Independent warm air (Jingwei 4kw)			
Chassis	Engine	Model	D12C5-462E0 (Deutz, 12.12L, Euro V , Engine-Brake)		
		Rated power (kW/rpm)	340/1900		
		Maximum torque (N.m/rpm)	2200/1000-1400		
		Clutch	φ 430		
	Gearbox	12JSDX240T (Fast), Ratio 13.15-1			
		Type	9.5T (HANDE)		
		Others	Self-adjusting arm, ABS, brake pad wear alarm, waterproof axle		
		Type	16T (HANDE) i=5.26		
	Drive axle	Differential lock	Differential lock between wheels and differential lock between shafts		
		Others	Self-adjusting arm, ABS, brake pad wear alarm, waterproof axle		
		Tyre	315/80R22.5 ● 12.00R20 ○		
		Frame	940-860x316x(B+8)		
	Front suspension	10 leafs (width 80mm, thickness 18mm multiple-leaf spring)			
	Rear suspension	12 leafs (width 90mm, thickness 28mm+25mm multiple-leaf spring+Four horse integrated balance shaft)			
	Braking	Pneumatic double circuit drum brake, ABS+ESC			
	Fuel tank	400L (aluminum)			
Battery	Low temperature 180Ah				
Cold region configuration	Tank heating, fuel heating, inlet preheating (cold start)	●	●		
Optional	LCD multimedia screen (body)	x	●		
	Multifunctional steering wheel	x	●		
	360 view	x	●		
	Integral rearview mirror (body)	x	●		
	Electric cab lift (body)	x	●		
	Ignition key integration (body)	x	●		
Applicable Scene (Recommend)	Mine/urban foundation trench				
	Typical mine: gold mine short mileage transportation, mine stripping Typical road: unpaved, pothole/soft/compact dominated, paved road accounts for a small proportion GVW: 55-65t General used speed: Full load 10-20km/h (off highway) Empty load 20-30km/h (off highway) Maximum speed: no typical demand, or ≤70km/h				
Note: X-without; ○ -Optional; ● -Standard ; The above configuration parameters are for reference. The manufacturer reserves the right to change them without prior notice. The right to interpret them is reserved by the manufacture					

Russia Dumper configuration and work condition recommendation 6x4					
Standard Model Overdrive transmission i=5.26 by class C orders		SYZ320C-85(V) (Main Selling)-Deutz Engine		SYZ320C-8W(V) -Weichai Engine	
		Luxury Model Overdrive transmission i=5.26 by class C orders	Standard Model Overdrive transmission i=4.77 by class C orders	Luxury Model Overdrive transmission i=4.77 by class C orders	Standard with overdrive gear i=5.92 ZZX20000270
		8800x2540x3580		4000+1400	
		16500		16500	
		55000-65000		45000-55000	
48-74		53-82		42-66	
91		100		81	
105 (SW speed limited at 90)		116 (Limit speed 90 by software)		94 (SW speed limited at 90)	
●	●	●	●	●	
○	○	○	○	○	
●	●	●	●	●	
○	○	○	○	○	
318 cab, Standard Roof with single bed					
Remote Key, Central Lock, Electric Glass Lifting Independent warm air (Jingwei 4kw)					
		D12C5-462E0 (Deutz, 12.12L, Euro V , Engine-Brake)		WP10.336E53 (Weichai, 9.726L, Euro V , Exhaust braking)	
		340/1900		247/1900	
		2200/1000-1400		1550/1200-1500	
		φ 430		φ 430	
12JSDX240TA (Fast), Ratio 13.15-1		12JSDX240TA(Fast), Ratio 12.10-0.78		12JSD160TA (Fast), Ratio 12.10-0.78	
		9.5T (HANDE)		7.5T(HANDE)	
Self-adjusting arm, ABS, brake pad wear alarm, waterproof axle					
16T (HANDE) i=5.26		16T (HANDE) i=4.77		16T (HANDE) i=5.92	
Differential lock between wheels and differential lock between shafts					
Self-adjusting arm, ABS, brake pad wear alarm, waterproof axle					
		315/80R22.5 ● 12.00R20 ○		12.00R20	
		940-860x316x(B+8)		940-860x316x(B+8)	
		10 leafs (width 80mm, thickness 18mm multiple-leaf spring)		10 leafs (width80mm, thickness18mm)	
		12 leafs (width 90mm, thickness 28mm+25mm multiple-leaf spring+Four horse integrated balance shaft)		12leafs (width 90mm, thickness 28mm+25mm)	
Pneumatic double circuit drum brake, ABS+ESC					
		400L (aluminum)		400L (aluminum)	
Low temperature 180Ah					
●	●	●	●	●	
x	●	x	●	x	
x	●	x	●	x	
x	●	x	●	x	
x	●	x	●	x	
x	●	x	●	x	
x	●	x	●	x	
Urban road construction		Urban road construction		Urban road construction	
Typical scene: muck road transportation around Moscow Typical road: non-paved road both loading and unloading sides, accounting for a small proportion, in and out of the compact road , good condition; The middle is paved with asphalt, two - way fast lane General used speed:km/h Full load 30 (off highway), 65 (highway) Empty load 50 (off highway), 70 (highway) Maximum speed: km/h Full load 80 (highway), Empty load 90 (highway)		Typical scene: muck road transportation around Moscow Typical road: non-paved road both loading and unloading sides, accounting for a small proportion, in and out of the compact road , good condition; The middle is paved with asphalt, two - way fast lane General used speed:km/h Full load 30 (off highway), 65 (highway) Empty load 50 (off highway), 70 (highway) Maximum speed: km/h Full load 80 (highway), Empty load 100 (highway)		Typical scene: around Moscow Typical road: non-paved road both loading and unloading sides, accounting for a small proportion, in and out of the compact road , good condition; The middle is paved with asphalt, two - way fast lane GVW: 45-55t General used speed:km/h Full load 30 (off highway), 65 (highway) Empty load 50 (off highway), 70 (highway) Maximum speed: km/h Full load 70 (highway), Empty load 90 (highway)	
Note: X-without; ○ -Optional; ● -Standard ; The above configuration parameters are for reference. The manufacturer reserves the right to change them without prior notice. The right to interpret them is reserved by the manufacture					

RUSSIA

STRONG POWER AND FAST CLIMBING SPEED

460 horsepower , great climbing ability in highway and mine transport application. Extra trip every day for better profit.

MORE LOADING. MORE DURABLE

9.5T front axle, 16T rear axle, 316 height, 8 + 8 double layer frame, T55 balance suspension, four turn stronger bearing capacity, high strength wear resistant steel. The tail gate is also strengthened for better superstructure resistance.

EXTREMELY SAFE AND SECURE

Reliability test is carried out in various working conditions, which ensures the normal operation of vehicles for a long life cycle.
Cold area package configuration ensures more reliable operation under low temperature environment. Metal frame structure and white body guarantees personal safety.



Russia Dumper configuration and work condition recommendation 8x4				
type		SYZ436C-85(V) Sany Deutz Engine (main sales)		
		Standard Model Direct transmission i=5.26	Luxury Model Direct transmission i=5.26	
		ZZX200000460	vehicle number Waiting for application	
Vehicle parameters	Dimension (LxWxH)mm	standard	10600x2550x3680 (length of cargo 7600)	
		optional	10200x2550x3680 (length of cargo 7200), 11000x2550x3680 (length of cargo 8000), 11200x2550x3680 (length of cargo 8200)	
	Wheel base mm	standard	2000+3900+1400 (length of cargo 7600)	
		optional	2000+3600+1400 (length of cargo 7200), 2000+4200+1400 (length of cargo 8000,8200)	
	Curb Weight(kg)		23500	
	Full Load Weight(kg)		70000	
	Economic speed range		37-58	
Rated maximum speed (1900rpm)		71		
Permissible maximum speed (2200rpm)		82		
Body 2350mm width	2000mm high	36m³ (7600mm length) ● , 34m³ (7200mm length) ○ , 38m³ (8000mm length) ○ , 39m³ (8200mm length) ○		
	1500mm high	27m³ (7600mm length) ○ , 26m³ (7200mm length) ○ , 28m³ (8000mm length) ○ , 29m³ (8200mm length) ○		
Cargo Type	Type	Rectangular ● , U-Type ○		
	Tail	Vertical Tailgate ● , Inclined Tailgate ○		
Cab	Model	318 cab, Standard Roof with single bed		
	Others	Remote Key, Central Lock, Electric Glass Lifting, Independent warm air (4kw)		
Chassis parameters	engine	Model	D12C5-490E0 (Deutz, 12.12L, Euro V , Engine-Brake)	
		Rated power (kW/rpm)	360/1900	
		Maximum torque (Nm/rpm)	2200/1000-1400	
		clutch	φ 430	
	transmission	12JSDX240TB (Fast), Ratio 15.53-1		
		9.5T (HANDE)		
	front axle	Model	Self-adjusting arm, ABS, brake pad wear alarm, waterproof axle	
		other	16T (HANDE) i=5.26	
	Drive axle	Model	16T (HANDE) i=4.77	
		Differential lock	Differential lock between wheels and differential lock between shafts	
		other	Self-adjusting arm, ABS, brake pad wear alarm, waterproof axle	
		Tyre	315/80R22.5 ● , 12.00R20 ○	
	frame	940-860 * 316 * (8 + 8 + 4)		
	front suspension	10 leafs (width 80mm, thickness 18mm multi-piece spring + shock absorber)		
	rear suspension	12 leafs (width 90mm, thickness 28mm+25mm multi-spring + four-horse integrated balance shaft)		
brake	Pneumatic double circuit drum brake, ABS+ESC			
fuel tank	400L ● (aluminum) , 600L ○ (aluminum)			
battery	Low temperature 180Ah			
Cold region configuration	Tank heating, fuel heating, inlet preheating (cold start)	●	●	
Optional	LCD multimedia screen (body)	x	●	
	Multifunctional m³ directional disk	x	●	
	360 view	x	●	
	Integral rearview mirror (body)	x	●	
	Electric cab lift (body)	x	●	
	Ignition key integration (body)	x	●	
Application Scenario (Recommended)	Mine/urban foundation trench			
	Typical mine: gold mine short mileage transportation, mine stripping Typical road: unpaved, pothole/soft/compact dominated, paved road accounts for a small proportion GVW: 55-65t General used speed: Full load 10-20km/h (off highway) Empty load 20-30km/h (off highway) Maximum speed: no typical demand, or ≤70km/h			
Note: X- does not adopt; ○ - Optional (Class C orders); ● - Standard; The above configuration parameters are for reference. The manufacturer reserves the right to change them without prior notice. The right to interpret them is reserved by the manufacturer				

Russia Dumper configuration and work condition recommendation 8x4					
SYZ436C-85(V) Sany Deutz Engine (main sales)			SYZ436C-8W(V) Weichai Engine(non-main sales)		
Standard Model Overdrive transmission i=5.26	Luxury Model Overdrive transmission i=5.26	Standard Model Overdrive transmission i=4.77	Luxury Model Overdrive transmission i=4.77	standard Direct transmission i=5.26	standard Overdrive transmission i=5.26
by class C orders	vehicle number Waiting for application	by class C orders	vehicle number Waiting for application	by class C orders	ZZX200000461
			10600x2550x3680 (length of cargo 7600)		
			10200x2550x3680 (length of cargo 7200), 11000x2550x3680 (length of cargo 8000), 11200x2550x3680 (length of cargo 8200)		
			2000+3900+1400 (length of cargo 7600)		
			2000+3600+1400 (length of cargo 7200), 2000+4200+1400 (length of cargo 8000, 8200)		
			23500		
			70000		
48-74			53-82		
91			100		
105 (Limit speed 90 by software)			116 (Limit speed 90 by software)		
			36m³ (7600mm length) ● , 34m³ (7200mm length) ○ , 38m³ (8000mm length) ○ , 39m³ (8200mm length) ○		
			27m³ (7600mm length) ○ , 26m³ (7200mm length) ○ , 28m³ (8000mm length) ○ , 29m³ (8200mm length) ○		
			Rectangular ● , U-Type ○		
			Vertical Tailgate ● , Inclined Tailgate ○		
			318 cab, Standard Roof with single bed		
			Remote Key, Central Lock, Electric Glass Lifting, Independent warm air (4kw)		
			D12C5-490E0 (Deutz, 12.12L, Euro V , Engine-Brake)		
			360/1900		
			2200/1000-1400		
			φ 430		
12JSDX240TA (Fast) , Ratio 12.1-0.78			12JSDX240TA (Fast), Ratio 12.1-0.78		
			9.5T (HANDE)		
			Self-adjusting arm, ABS, brake pad wear alarm, waterproof axle		
16T (HANDE) i=5.26			16T (HANDE) i=4.77		
			Differential lock between wheels and differential lock between shafts		
			Self-adjusting arm, ABS, brake pad wear alarm, waterproof axle		
			315/80R22.5 ● , 12.00R20 ○		
			940-860 * 316 * (8 + 8 + 4)		
			10 leafs (width 80mm, thickness 18mm multi-piece spring + shock absorber)		
			12 leafs (width 90mm, thickness 28mm+25mm multi-spring + four-horse integrated balance shaft)		
			Pneumatic double circuit drum brake, ABS+ESC		
			400L ● (aluminum), 600L ○ (aluminum)		
			Low temperature 180Ah		
●			●		
x			●		
x			●		
x			●		
x			●		
x			●		
x			●		
x			●		
Urban road construction			Urban road construction		
Typical scene: muck road transportation around Moscow Typical road: non-paved road both loading and unloading sides, accounting for a small proportion, in and out of the compact road , good condition; The middle is paved with asphalt, two - way fast lane General used speed:km/h Full load 30 (off highway), 65 (highway) Empty load 50 (off highway), 70 (highway) Maximum speed: km/h Full load 80(highway), Empty load 90(highway)			Typical scene: muck road transportation around Moscow Typical road: non-paved road both loading and unloading sides, accounting for a small proportion, in and out of the compact road , good condition; The middle is paved with asphalt, two - way fast lane General used speed:km/h Full load 30 (off highway), 65 (highway) Empty load 50 (off highway), 70 (highway) Maximum speed: km/h Full load 80(highway), Empty load 100(highway)		
			Typical mine: gold mine short mileage transportation, mine stripping Typical road: unpaved, pothole/soft/compact dominated, paved road accounts for a small proportion GVW: 55-65t General used speed: Full load 10-20km/h (off highway) Empty load 20-30km/h (off highway) Maximum speed: no typical demand, or ≤70km/h		
			Typical scene: muck road transportation around Moscow Typical road: non-paved road both loading and unloading sides, accounting for a small proportion, in and out of the compact road , good condition; The middle is paved with asphalt, two - way fast lane General used speed:km/h Full load 30 (off highway), 65 (highway) Empty load 50 (off highway), 70 (highway) Maximum speed: km/h Full load 80(highway), Empty load 90(highway)		
Note: X- does not adopt; ○ - Optional (Class C orders); ● - Standard; The above configuration parameters are for reference. The manufacturer reserves the right to change them without prior notice. The right to interpret them is reserved by the manufacturer					

SAUDI ARABIA/MIDDLE EAST

STRONG POWER AND BETTER DRIVE EXPERIENCE

Higher horse power engine offers up to 490 horse power, higher efficiency powertrain with strong load capability gives you confidence to overcome tough work conditions everywhere. Comfortable 318 cabin offers better experience for drivers.

ROBUST DESIGN WITH HIGH DURABILITY IN HARSH ENVIRONMENT

Run well in 50 C higher environment with heavy payload, Air intake filter designed for working in dusty area. Sufficient tests and scientific simulations ensure its reliable and trustworthy quality.

INTELLIGENT AND SAFE

MachineLink+ Terminal allows operators to monitor truck's state and location in real time. This helps operators to improve drive habit in order to reduce fuel consumption.

The truck's GPS location can be tracked by managers, which helps to trace the truck's journey or set geofence. Result in safe operation of the trucks.



Saudi Arabia Dumper configuration and work condition recommendation 6x4			
Product Model		SYZ320C-8Y	
		Standard Model (Mine Work condition)	Optional Model (City Work Condition)
		ZZX100000462	By Order
Vehicle parameter	Dimension (LxWxH)(mm)	8800x2540x3580	8800x2540x3580
	Wheel Base (mm)	4000+1400	
	Curb Weight (kg)	16500	
	Full Load Weight (kg)	55000	
	Economic Speed Range (Top gear)	30-56	48-74
	Rated Maximum Speed (1900rpm)	71	91
Permissible Maximum Speed (2100rpm)	82	105 (limited to 90 by software)	
Cargo	20m³ (5800*2300*1500mm)	●	
	Rectangle-Type	●	
	24m³ (5800*2300*1800mm)	○	
	U-Type	○	
Cabin	Cabin Model	318Lcabin, Standard Roof with single bed	
	Others	Remote Key, Central Lock, Electric Window Lifting, Air Condition, Multimedia Player with Radio, Air Suspension driver seat, Multifunction Dashboard with LED screen Display	
Chassis	Engine	Model	YC6MK400-30 (Yuchai, Euro III, 10.338L)
		Rated power (kW/rpm)	294/1900
		Maximum torque (N.m/rpm)	1800/1100-1500
		Auxiliary brake	Exhaust Brake
	Clutch	Ø430	
	Transmission	12JSD200T-B (Fast), Ratio 15.53-1	12JSDX240TA (Fast), Ratio 12.1-0.78
	Front axle	9T	
	Drive axle	ABS, waterproof axle	
		2x16T, i=5.26	
		Differential lock between wheels and differential lock between shafts	
		ABS, waterproof axle	
	Tyre	315/80R22.5 ● 12.00R20 ○	
	Frame	610L high strength steel frame (940-860)x316x(8+8)	
	Front suspension	10 leafs spring with shock absorber	
	Rear suspension	12 leafs spring	
Braking	Pneumatic double circuit drum brake, ABS		
Fuel tank	300L (aluminum)		
Battery	2x12V-165Ah		
Optional	LCD multimedia screen (body)	○	
	Headlamp and Taillights Protection	●	
	MachineLink+	●	
	Electric cabin lift	○	
Applicable Scene (Recommend)a		Typical mine: mine short mileage transportation, mine stripping, payload less than 38t Typical road: unpaved, pothole/soft/compact dominated, paved road accounts for a small proportion GVW: 55t General used speed: Full load 10-20km/h (offroad) Empty load 20-30km/h (offroad) Maximum speed: usually ≤70km/h	Typical scene: muck road transportation around city, high speed drive needed Typical road: Road has high speed condition with load General used speed: km/h Full load 30 (offroad), 65 (highway) Empty load 50 (offroad), 70 (highway) Maximum speed: km/h Full load 80 (highway), Empty load 90 (highway)
Note: X- does not adopt; ○ - Optional (Class C orders); ● - Standard; The above configuration parameters are for reference. The manufacturer reserves the right to change them without prior notice. The right to interpret them is reserved by the manufacturer			

Saudi Arabia Dumper configuration and work condition recommendation 8x4				
type		SYZ428C-8S(V)		
		Standard Model (Mine Work condition)	Optional Model (City Work Condition)	
		ZZX200000448	By Order	
Vehicle parameters	Dimension (LxWxH)mm	standard	11000x2540x3580	
	Wheel base mm	standard	2000+4200+1400	
	Curb Weight		21600	
	Full Load Weight		78000	
	Economic speed range (Top gear)		32-57	48-74
	Rated maximum speed (1900rpm)		74	91
	Permissible maximum speed (2200rpm)		82	105 (limited to 90 by software)
	Body Size	28m³ (8000*2350*1500mm)		●
Body Shape	Rectangle-Type		●	
	U-type		○	
Cabin	Cabin Model		318Lcabin, Standard Roof with single bed	
	Others		Remote Key, Central Lock, Electric Window Lifting, Air Condition, LCD screen Multimedia Player, Air Suspension driver seat, Multifunction Dashboard with LED screen Display	
Chassis parameters	engine	Model	D12C5-490E0 (Sany Deutz Power, Euro V, 12.12L)	
		Rated power (kW/rpm)	360/1900	
		Maximum torque (N.m/rpm)	2200/1000-1400	
		Auxiliary brake	Engine Brake	
	Clutch	Ø430		
	Transmission	12JSDX240T (Fast), Ratio 13.15-1	12JSDX240TA (Fast), Ratio 12.1-0.78	
	Drive axle	1st/2nd axle		9T
		ABS, waterproof axle		
		2x16T, i=5.26		
		Differential lock between wheels and shafts		
	Tyre	Model		12.00R20 ● 315/80R22.5 ○
		Differential lock		Differential lock between wheels and shafts
		other		ABS, waterproof axle
		Tyre		12.00R20 ● 315/80R22.5 ○
	Frame	940/860x316x(8+8)		
front suspension	10 leafs spring with shock absorber			
rear suspension	12 leafs spring			
brake	type	Pneumatic double circuit drum brake, ABS		
fuel tank	volume	400L (aluminum)		
battery	capacity	2x12V-165Ah		
Optional	LCD multimedia screen (body)		●	
	Headlamp and Taillights Protection		○	
	Tree Root IoT Terminal		●	
	Electric cab lift (body)		○	
Applicable Scene (Recommend)		Typical mine: mine short mileage transportation, mine stripping, payload less than 55t Typical road: unpaved, pothole/soft/compact dominated, paved road accounts for a small proportion GVW: 78t General used speed: Full load 10-20km/h (offroad) Empty load 20-30km/h (offroad) Maximum speed: usually ≤70km/h	Typical scene: muck road transportation around city, high speed drive needed Typical road: Road has high speed condition with load General used speed: km/h Full load 30 (offroad), 65 (highway) Empty load 50 (offroad), 70 (highway) Maximum speed: km/h: Full load 80 (highway), Empty load 90 (highway)	
Note: X- does not adopt; ○ - Optional (Class C orders); ● - Standard; The above configuration parameters are for reference. The manufacturer reserves the right to change them without prior notice. The right to interpret them is reserved by the manufacturer				

AFRICA

STRONG POWER AND BETTER DRIVE EXPERIENCE

Offers up to 400 horse power, stronger power, higher efficiency powertrain with strong load capability gives you confidence to overcome tough work conditions everywhere. Comfortable 318 cabin offers better experience for drivers.

ROBUST DESIGN WITH HIGH DURABILITY IN HARSH ENVIRONMENT

Air intake filter designed for working in dusty area. Reinforced 316mm height, 8mm+8mm thickness chassis frame, T55 rear suspension and reinforced 4-joint tipping axle offer outstanding durability. Sufficient tests and scientific simulations ensure reliability and trustworthy quality.

INTELLIGENT AND SAFETY

MachineLink+ Terminal allows operators to monitor truck's state and location in real time. This helps operators to improve drive habit in order to reduce fuel consumption.

The truck's GPS location can be tracked by managers, which helps to trace the truck's journey or set geofence. Result in safe operation of the trucks.



Africa Dumper configuration and work condition recommendation 6x4				
Product Model		SYZ320C-8Y(II) LH		
		Mine/urban foundation trench	Urban road construction	
		ZZX100000450	By orders	
		Direct transmission	Overdrive transmission	
Vehicle parameter	Dimension (LxWxH)(mm)	8800x2540x3580		
	Wheel Base(mm)	4000+1400		
	Curb Weight(kg)	16.5t		
	Full Load Weight(kg)	55t		
	Economic Speed Range (Maximum Gear)	42-58	55-75	
Body Size	Rated Maximum Speed-1900rpm	73	95	
	20m³ (5800*2350*1500mm)	●	●	
Cargo Type	23m³ (5800*2350*1700mm)	○	○	
	Rectangular	●	●	
Cab	U-Type	○	○	
	Cab Model	318 cab (Left Handle), Standard Roof with single bed		
Chassis	Others	Remote Key, Electric Glass Lifting		
	Engine	Model	YC6MK400-33 (Yuchai), Euro II, 10.338L	
		Rated power (kW/rpm)	294/1900	
		Maximum torque (N.m/rpm)	1800/1100-1500	
		Auxiliary braking	exhaust brake	
	Clutch	φ 430		
	Gearbox	12JSD200T-B (Fast), Ratio 15.53-1	12JSDX240TA (Fast), Ratio 12.10-0.78	
		Front axle	9T	
	Drive axle	Type	Self-adjusting arm, waterproof axle	
		Others	2x16Tj=5.26	
		Differential lock	Differential lock between wheels and differential lock between shafts	
		Others	manual adjustment arm, brake pad wear alarm, waterproof axle	
Tyre	12.00R20 ● 315/80R22.5 ○			
Frame	940-860x316x(B+B)			
Front suspension	10 leaves (width 90mm, thickness 18mm multiple-leaf spring)			
Rear suspension	12 leaves (width 90mm, thickness 28mm+25mm multiple-leaf spring+Four horse integrated balance shaft)			
Breaking	Pneumatic double circuit drum brake			
Fuel tank	300L ● (aluminum)			
Battery	165Ah frigostable			
Optional	Undertank protection	●		
	Headlight and side light guard mesh	○		
Applicable Scene (Recommend)	Typical mine: gold mine short mileage transportation, mine stripping Typical road: unpaved, pothole/soft/compact dominated, paved road accounts for a small proportion GVW: 55t General used speed: Full load 10-20km/h (off highway) Empty load 20-30km/h (off highway) Maximum speed: no typical demand, or ≤70km/h	Typical scene: muck road transportation around city Typical road: non-paved road both loading and unloading sides, accounting for a small proportion, in and out of the compact road, good condition; The middle is paved with asphalt, two-way fast lane General used speed: km/h Full load 30 (off highway), 65 (highway) Empty load 50 (off highway), 70 (highway) Maximum speed: km/h Full load 80 (highway), Empty load 90 (highway)		
Note: ○ -Optional; ● -Standard; The above configuration parameters are for reference. The manufacturer reserves the right to change them without prior notice. The right to interpret them is reserved by the manufacture				

Africa Dumper configuration and work condition recommendation 6x4				
Product Model		SYZ320C-8Y(II) RH		
		Mine/urban foundation trench	Urban road construction	
		ZZX100000382	By orders	
		Direct transmission	Overdrive transmission	
Vehicle parameter	Dimension (LxWxH)(mm)	8800x2540x3580		
	Wheel Base(mm)	4000+1400		
	Curb Weight(kg)	16.5t		
	Full Load Weight(kg)	55t		
	Economic Speed Range (Maximum Gear)	42-58	55-75	
Body Size	Rated Maximum Speed-1900rpm	73	95	
	20m³ (5800*2350*1500mm)	●	●	
Cargo Type	23m³ (5800*2350*1700mm)	○	○	
	Rectangular	●	●	
Cab	U-Type	○	○	
	Cab Model	318 cab (Right Handle), Standard Roof with single bed		
Chassis	Others	Remote Key, Electric Glass Lifting		
	Engine	Model	YC6MK400-33 (Yuchai), Euro II, 10.338L	
		Rated power (kW/rpm)	294/1900	
		Maximum torque (N.m/rpm)	1800/1100-1500	
		Auxiliary braking	exhaust brake	
	Clutch	φ 430		
	Gearbox	12JSD200T-B (Fast), Ratio 15.53-1	12JSDX240TA (Fast), Ratio 12.10-0.78	
		Front axle	9T	
	Drive axle	Type	Self-adjusting arm, waterproof axle	
		Others	2x16Tj=5.26	
		Differential lock	Differential lock between wheels and differential lock between shafts	
		Others	manual adjustment arm, brake pad wear alarm, waterproof axle	
Tyre	12.00R20 ● 315/80R22.5 ○			
Frame	940-860x316x(B+B)			
Front suspension	10 leaves (width 90mm, thickness 18mm multiple-leaf spring)			
Rear suspension	12 leaves (width 90mm, thickness 28mm+25mm multiple-leaf spring+Four horse integrated balance shaft)			
Breaking	Pneumatic double circuit drum brake			
Fuel tank	300L ● (aluminum)			
Battery	165Ah frigostable			
Optional	Undertank protection	●		
	Headlight and side light guard mesh	○		
Applicable Scene (Recommend)	Typical mine: gold mine short mileage transportation, mine stripping Typical road: unpaved, pothole/soft/compact dominated, paved road accounts for a small proportion GVW: 55t General used speed: Full load 10-20km/h (off highway) Empty load 20-30km/h (off highway) Maximum speed: no typical demand, or ≤70km/h	Typical scene: muck road transportation around city Typical road: non-paved road both loading and unloading sides, accounting for a small proportion, in and out of the compact road, good condition; The middle is paved with asphalt, two-way fast lane General used speed: km/h Full load 30 (off highway), 65 (highway) Empty load 50 (off highway), 70 (highway) Maximum speed: km/h Full load 80 (highway), Empty load 90 (highway)		
Note: ○ -Optional; ● -Standard; The above configuration parameters are for reference. The manufacturer reserves the right to change them without prior notice. The right to interpret them is reserved by the manufacture				

AFRICA

STRONG POWER AND BETTER DRIVE EXPERIENCE

Offers up to 430 horse power, stronger power, higher efficiency powertrain with strong load capability gives you confidence to overcome tough work conditions everywhere. Comfortable 318 cabin offers better experience for drivers.

ROBUST DESIGN WITH HIGH DURABILITY IN HARSH ENVIRONMENT

Air intake filter designed for working in dusty area. Reinforced 316mm height, 8mm+8mm thickness chassis frame, T55 rear suspension and reinforced 4-joint tipping axle offer outstanding durability. Sufficient tests and scientific simulations ensure reliability and trustworthy quality.

INTELLIGENT AND SAFETY

MachineLink+ Terminal allows operators to monitor truck's state and location in real time. This helps operators to improve drive habit in order to reduce fuel consumption.

The truck's GPS location can be tracked by managers, which helps to trace the truck's journey or set geofence. Result in safe operation of the trucks.



Africa Dumper configuration and work condition recommendation 8x4				
Product Model		SYZ428C-6W(II) LH		
		Mine/urban foundation trench	Urban road construction	
		ZZX100000452(Left)	By orders	
		Direct transmission	Overdrive transmission	
Vehicle parameter	Dimension (LxWxH)(mm)	standard	11000x2540x35800 (length of cargo 8000)	
		optional	10200x2540x35800 (length of cargo 7200)	
	Wheel Base(mm)	standard	2000+4200+1400 (length of cargo 8000)	
		optional	2000+3600+1400 (length of cargo 7200)	
	Curb Weight(kg)		22.6t	
	Full Load Weight(kg)		78t	
Economic Speed Range (Maximum Gear)		42-58	55-75	
Rated Maximum Speed-1900rpm		73	95	
Body	28m³ (8000*2350*1500mm length)	●	●	
	25m³ (7200*2350*1500mm length)	○	○	
Cargo Type	Rectangular	●	●	
	U-Type	○	○	
Cab	Cab Model	318 cab, Standard Roof with single bed		
	Others	Remote Key, Electric Glass Lifting manual adjustment Rearview Mirror		
Chassis	Engine	Model	WP12.430E201 (Weichai), Euro II, 11.596L	
		Rated power (kW/rpm)	316/1900	
		Maximum torque (N.m/rpm)	2000/1000-1400	
		Auxiliary braking	exhaust brake	
	Clutch		φ 430	
	Gearbox		12JSDX240T (Fast), Ratio 13.15-1	12JSDX240TA (Fast), Ratio 12.10-0.78
	Front axle	Type	9.5T	
		Others	Self-adjusting arm, waterproof axle	
	Drive axle	Type	2x16T, i=5.26 (Optional 4.77/5.92)	
		Differential lock	Differential lock between wheels and differential lock between shafts	
		Others	manual adjustment arm, brake pad wear alarm, waterproof axle	
	Tyre		12.00R20 ● 315/80R22.5 ○	
	Frame		940-860x316x(8+8)	
	Front suspension		10 leafs (width 90mm, thickness 20mm multiple-leaf spring)	
Rear suspension		12 leafs (width 90mm, thickness 28mm+30mm multiple-leaf spring+Four horse integrated balance shaft)		
Breaking		Pneumatic double circuit drum brake		
Fuel tank		400L ● (aluminum)		
Battery		165Ah frigestable		
Optional	Undertank protection	●		
	Headlight and side light guard mesh	○		
Applicable Scene (Recommend)		Typical mine: gold mine short mileage transportation, mine stripping Typical road: unpaved, pothole/soft/compact dominated, paved road accounts for a small proportion GVW: 78t General used speed: Full load 10-20km/h (off highway) Empty load 20-30km/h (off highway) Maximum speed: no typical demand, or ≤70km/h	Typical scene: muck road transportation around city Typical road: non-paved road both loading and unloading sides, accounting for a small proportion, in and out of the compact road, good condition; The middle is paved with asphalt, two-way fast lane General used speed: km/h Full load 30 (off highway), 65 (highway) Empty load 50 (off highway), 70 (highway) Maximum speed: km/h Full load 80 (highway), Empty load 90 (highway)	
Note: ○ -Optional; ● -Standard; The above configuration parameters are for reference. The manufacturer reserves the right to change them without prior notice. The right to interpret them is reserved by the manufacture				

Africa Dumper configuration and work condition recommendation 8x4				
Product Model		SYZ428C-6W(II) RH		
		Mine/urban foundation trench	Urban road construction	
		By orders	By orders	
		Direct transmission	Overdrive transmission	
Vehicle parameter	Dimension (LxWxH)(mm)	standard	11000x2540x35800 (length of cargo 8000)	
		optional	10200x2540x35800 (length of cargo 7200)	
	Wheel Base(mm)	standard	2000+4200+1400 (length of cargo 8000)	
		optional	2000+3600+1400 (length of cargo 7200)	
	Curb Weight(kg)		22.6t	
	Full Load Weight(kg)		78t	
Economic Speed Range (Maximum Gear)		42-58	55-75	
Rated Maximum Speed-1900rpm		73	95	
Body	28m³ (8000*2350*1500mm length)	●	●	
	25m³ (7200*2350*1500mm length)	○	○	
Cargo Type	Rectangular	●	●	
	U-Type	○	○	
Cab	Cab Model	318 cab, Standard Roof with single bed		
	Others	Remote Key, Electric Glass Lifting manual adjustment Rearview Mirror		
Chassis	Engine	Model	WP12.430E201 (Weichai), Euro II, 11.596L	
		Rated power (kW/rpm)	316/1900	
		Maximum torque (N.m/rpm)	2000/1000-1400	
		Auxiliary braking	exhaust brake	
	Clutch		φ 430	
	Gearbox		12JSDX240T (Fast), Ratio 13.15-1	12JSDX240TA (Fast), Ratio 12.10-0.78
	Front axle	Type	9.5T	
		Others	Self-adjusting arm, waterproof axle	
	Drive axle	Type	2x16T, i=5.26 (Optional 4.77/5.92)	
		Differential lock	Differential lock between wheels and differential lock between shafts	
		Others	manual adjustment arm, brake pad wear alarm, waterproof axle	
	Tyre		12.00R20 ● 315/80R22.5 ○	
	Frame		940-860x316x(8+8)	
	Front suspension		10 leafs (width 90mm, thickness 20mm multiple-leaf spring)	
Rear suspension		12 leafs (width 90mm, thickness 28mm+30mm multiple-leaf spring+Four horse integrated balance shaft)		
Breaking		Pneumatic double circuit drum brake		
Fuel tank		400L ● (aluminum)		
Battery		165Ah frigestable		
Optional	Undertank protection	●		
	Headlight and side light guard mesh	○		
Applicable Scene (Recommend)		Typical mine: gold mine short mileage transportation, mine stripping Typical road: unpaved, pothole/soft/compact dominated, paved road accounts for a small proportion GVW: 78t General used speed: Full load 10-20km/h (off highway) Empty load 20-30km/h (off highway) Maximum speed: no typical demand, or ≤70km/h	Typical scene: muck road transportation around city Typical road: non-paved road both loading and unloading sides, accounting for a small proportion, in and out of the compact road, good condition; The middle is paved with asphalt, two-way fast lane General used speed: km/h Full load 30 (off highway), 65 (highway) Empty load 50 (off highway), 70 (highway) Maximum speed: km/h Full load 80 (highway), Empty load 90 (highway)	
Note: ○ -Optional; ● -Standard; The above configuration parameters are for reference. The manufacturer reserves the right to change them without prior notice. The right to interpret them is reserved by the manufacture				

PHILIPPINES

STRONG POWER AND BETTER DRIVE EXPERIENCE

Higher horse power engineranges from 400 to490 horse power, higher efficiency powertrain with strong load capability gives you confidence to overcome tough work conditions everywhere.Comfortable 318 cabin offers better experience for drivers.

ROBUST DESIGN WITH HIGH DURABILITY IN HARSH ENVIRONMENT

Outstanding adaptability ensures stable working in -20 C to 50 C environment with heavy payload, Air intake filter designed for working in dusty area. Reinforced 316mm height,8mm+8mm thickness chassis frame and offers outstanding durability. Sufficient tests and scientific simulations ensure reliability and trustworthy quality.

INTELLIGENT AND SAFETY

MachineLink+ Terminal allows operators to monitor truck's state and location in real time.This helps operators to improve drive habit in order to reduce fuel consumption.

The truck's GPS location can be tracked by managers, which helps to trace the truck's journey or set geofence.Result in safe operation of the trucks.



Philippines Dump vehicle configuration and work condition recommendation				
Product Model		Yuchai Engine		
		SYZ320C-8Y	SYZ320C-8Y(V)	
		Direct transmission i=5.26	Direct transmission i=5.26	
		ZZX100000450	ZZX100000446	
Vehicle parameter	Dimension (LxWxH)(mm)	8800x2540x3580		
	Wheel Base(mm)	4000+1400		
	Curb Weight(kg)	16200		
	Full Load Weight(kg)	45000-55000		
	Economic Speed Range (Maximum Gear)	41-56		
	Rated Maximum Speed	71		
	Permissible Maximum Speed	82		
Body	BOX	20m³ (5800*2350*1500mm)		
	Cargo	Rectangle ● U type ○		
Cab	Cab Model	318 cab, Standard Roof with single bed		
	Others	Remote Key, Central Lock, Electric Glass Lifting,air-conditioning Hand Flip ● Electric Flip ○		
Chassis	Engine	Model	YC6MK400-33, Euro II, 10.33BL	YC6MK400-50, Euro V, 10.33BL
		Rated power (kW/rpm)	294/1900	
		Maximum torque (N.m/rpm)	1900/1100-1500	
		Auxiliary braking	Exhaust-Brake	Engine-Brake
	Clutch	φ 430		
	Gearbox	12JSD200T-B (Fast), Ratio 15.53-1		
	Front axle	Type	9T	
		Others	Hand-adjusting arm, waterproof axle	
	Drive axle	Type	2x16T i=5.26	
		Differential lock	Differential lock between wheels and differential lock between shafts	
		Others	Hand-adjusting arm, waterproof axle, Cast steel axle housing, Double reduction	
	Tyre	12.00R20 ● 315/80R22.5 ○		
	Frame	940-860x316x(8+8)		
	Front suspension	10 leafs (width 80mm, thickness 18mm multiple-leaf spring)		
	Rear suspension	12 leafs (width 90mm, thickness 28mm+25mm multiple-leaf spring+Four horse integrated balance shaft)		
	Braking	Pneumatic double circuit drum brake, ABS, KNORR		
	Fuel tank	300L ● (aluminum)		
Battery	165Ah			
Optional	Mine tyre	○	○	
	Tarpaulin system	○	○	
	360 view	○	○	
	ASR	○	○	
	Wear-resistant cargo box	○	○	
Applicable Scene (Recommend)	Mine/urban foundation trench			
	Scene 1: Typical mine: Nickel ore transportation Typical road: unpaved, pothole/soft/compact dominated, paved road accounts for a small proportion GVW: 45-55t General used speed: Full load 10-30km/h (off highway) Empty load 20-40km/h (off highway) Maximum speed: no typical demand, or ≤70km/h Scene 2: Typical scene: country/city, mend road, Park construction Typical road: non-paved road both loading and unloading sides, accounting for a small proportion, in and out of the compact road, good condition; The middle is paved with asphalt, two - way fast lane GVW: 45-55t General used speed: Full load 10-30km/h (off highway), 20-45km/h (highway) Empty load 20-40km/h (off highway), 30-50km/h (highway) Maximum speed: no typical demand, or ≤70km/h			
Note: X-without; ○ -Optional; ● -Standard ; The above configuration parameters are for reference. The manufacturer reserves the right to change them without prior notice. The right to interpret them is reserved by the manufacture				

Philippines Dump vehicle configuration and work condition recommendation					
Product Model		Deutz Engine		Weichai Engine	
		SYZ322C-8S(V)	SYZ428C-8S(V)	SYZ428C-6W	
		Direct transmission i=5.26	Direct transmission i=5.26	Direct transmission i=5.26	
		ZZX100000447	ZZX100000448	ZZX100000452	
Vehicle parameter	Dimension (LxWxH)(mm)	9150x2540x3580	11000x2540x3580		
	Wheel Base(mm)	4200+1400	2000+4200+1400		
	Curb Weight(kg)	16900	22600		
	Full Load Weight(kg)	55000-65000	65000-78000		
	Economic Speed Range (Maximum Gear)	37-52	37-52	41-56	
	Rated Maximum Speed	71	71	71	
	Permissible Maximum Speed	82	82	79	
Body	BOX	22m³ (6200x2350x1500)	28m³ (8000x2350x1500)		
	Cargo	Rectangle ● U type ○	Rectangle		
Cab	Cab Model	318 cab, Standard Roof with single bed			
	Others	Remote Key, Central Lock, Electric Glass Lifting,air-conditioning Hand Flip ● Electric Flip ○			
Chassis	Engine	Model	D12C5-462E0, Euro V, 12.12L	D12C5-490E0, Euro V, 12.12L	WP12.430E201, Euro II, 11.596L
		Rated power (kW/rpm)	340/1900	360/1900	316/1900
		Maximum torque (N.m/rpm)	2200/1000-1400		2000/1000-1400
		Auxiliary braking	Engine-Brake		Exhaust-Brake
	Clutch	φ 430			
	Gearbox	12JSDX240T (Fast), Ratio 13.15-1			
	Front axle	Type	9T		
		Others	Hand-adjusting arm, waterproof axle		
	Drive axle	Type	2x16T i=5.26		
		Differential lock	Differential lock between wheels and differential lock between shafts		
		Others	Hand-adjusting arm, waterproof axle, Cast steel axle housing, Double reduction		
	Tyre	12.00R20 ● 315/80R22.5 ○			
	Frame	940-860x316x(8+8)			
	Front suspension	10 leafs (width 80mm, thickness 20mm multiple-leaf spring)			
	Rear suspension	12 leafs (width 90mm, thickness 30mm+28mm multiple-leaf spring+ Four horse integrated balance shaft)			
	Braking	Pneumatic double circuit drum brake, ABS, KNORR			
	Fuel tank	400L ● (aluminum)			
Battery	165Ah				
Optional	Mine tyre	○	○	○	
	Tarpaulin system	○	○	○	
	360 view	○	○	○	
	ASR	○	○	○	
	Wear-resistant cargo box	○	○	○	
Applicable Scene (Recommend)	Mine/urban foundation trench		Mine/urban foundation trench		
	Scene 1: Typical mine: Nickel/Gold/ ore transportation Typical road: unpaved, pothole/soft/compact dominated, paved road accounts for a small proportion GVW: 55-65t General used speed: Full load 10-30km/h (off highway) Empty load 20-40km/h (off highway) Maximum speed: no typical demand, or ≤70km/h Scene 2: Typical scene: country/city, mend road, Park construction Typical road: non-paved road both loading and unloading sides, accounting for a small proportion, in and out of the compact road, good condition; The middle is paved with asphalt, two - way fast lane GVW: 55-65t General used speed: Full load 10-30km/h (off highway), 20-45km/h (highway) Empty load 20-40km/h (off highway), 30-50km/h (highway) Maximum speed: no typical demand, or ≤70km/h		Scene 1: Typical mine: Coal transportation Typical road: unpaved, pothole/soft/compact dominated, paved road accounts for a small proportion GVW 50-75t General used speed: Full load 10-30km/h (off highway) Empty load 20-40km/h (off highway) Maximum speed: no typical demand, or ≤70km/h Scene 2: Typical scene: country/city, mend road, Park construction, Finite weight requirement Typical road: non-paved road both loading and unloading sides, accounting for a small proportion, in and out of the compact road, good condition; The middle is paved with asphalt, two - way fast lane GVW: 50-75t General used speed: Full load 10-30km/h (off highway), 20-45km/h (highway) Empty load 20-40km/h (off highway), 30-50km/h (highway) Maximum speed: no typical demand, or ≤70km/h		
Note: X-without; ○ -Optional; ● -Standard ; The above configuration parameters are for reference. The manufacturer reserves the right to change them without prior notice. The right to interpret them is reserved by the manufacture					

THAILAND

CORE ASSEMBLY WITH TOP SUPPLIERS

Suppliers are well-known manufactures in the industry such as CATL battery, Ivkon motor transmission and INOVANCE five-in-one control unit.

OUTSTANDING POWER AND GRADEABILITY

Industry leading battery system with maximum motor power 460 kw, the maximum torque of 2900 nm. Gradability can reach more than 30%, dynamic performance far exceeds the fuel dump truck.

INTELLIGENT AND SAFETY

MachineLink+ Terminal allows operators to monitor truck's state and location in real time. This helps operators to improve drive habit in order to reduce fuel consumption. Electronic braking system and parking system, 8 optional auxiliary driving package, active and passive safety functions ensure a much safer driving environment.



Thailand series dump truck model configuration and working conditions recommended 2023-5 6X4 E-TIPPER		
Type		SYZ323C-8LRBEV
		Standard Greenland EM310H46+ 4 gears AMT +6.73
		EZX100000206
Vehicle parameters	Dimension (LxWxH)(mm)	9500x2540x3500
	Wheel Base(mm)	4550+1500
	Curb Weight(kg)	22500
	Full Load Weight(kg)	62500
	Rated Maximum Speed	100
	Permissible Maximum Speed	100
Dump body	Volume	23m ³ (6500*2350*1500mm)
	Type	Rectangle
	Thickness (mm)	Bottom 12 side 10
	Lift cylinder type	4TG179x4450
Cabin	Type	318 Flat top right hand rudder
	Other configurations	Single sleeper, surround-type instrument platform, air conditioner, voice entertainment central control large screen (with Bluetooth function, navigation function, radio function, USB and SD card interface, can connect with mobile phone to make and make calls, USB disk media playback function), sun visor, 2kg fire extinguisher, three steps (third level activity)
drive motor	Type	permanent magnet synchronous EM310H46
	Rated/peak power (kW)	315/460
	Rated/peak torque (N.m)	1650/2900Nm
Gearbox	Type	AMT
	Type	Energy type lithium iron phosphate battery
Power battery	Rated capacity (kWh)	350
	Arrangement type	Side
	Recharge time (SOC:20%-100%, 240kW double gun)	≤80min
	Frame	Basic size (mm)
front axle	Specification	9.5T
	Middle and rear axle	Specification
Speed ratio		6.73
suspension system	Balance shaft assembly type	T55
	Number of Leaf Springs	14/12
	Rear stabilizer bar (with/without)	with
	Material (steel/aluminum alloy)	Steel
rim	Specification	8.75 reinforced
	Type	Full wire radial tyre
tyre	Specification	12.00R24
	braking system	Type
steering gear	Specification	Integral cycle ball type
	Crawl control	●
Other configurations	ASR drive non-slip	●
	Energy recovery regulation	●
	OTA	●
	Application site (recommendation)	Mine
Typical scenario: mine short inverted transportation, with the characteristics of high power, high load, high passage, high protection, high reliability, high safety, low energy consumption products, meet the requirements of complex working conditions in mining areas. Typical road: unpaved, pothole/soft/compact-dominated, paved road accounts for a small proportion Total weight of vehicle and cargo GVW: ≤62.5 tons Commonly used speed: Full load 20-30km/h (off road) No-load 20-40km/h (off highway) Maximum speed: speed limit ≤100km/h (Thailand regulations, specific speed shall be subject to the actual requirements of mining area)		
Note: X- does not adopt; ○ - Optional (Class C orders); ● - Standard; The above configuration parameters are for reference. The manufacturer reserves the right to change them without prior notice. The right to interpret them is reserved by the manufacturer		

Thailand series dump truck model configuration and working conditions recommended 2023-5 8X4 E-TIPPER		
Type		SYZ428C-8LRBEV
		Standard Greenland EM310H46+ 4 gears AMT +6.73
		EZX100000207
Vehicle parameters	Dimension (LxWxH)(mm)	11200x2540x3500
	Wheel Base(mm)	2000+4150+1500
	Curb Weight(kg)	24500
	Full Load Weight(kg)	7500
	Rated Maximum Speed	100
	Permissible Maximum Speed	100
Dump body	Volume	28.2m ³ (8000*2350*1500mm)
	Type	Rectangle
	Thickness (mm)	Bottom 12 side 10
	Lift cylinder type	5TG202x5390
Cabin	Type	318 Flat top right hand rudder
	Other configurations	Single sleeper, surround-type instrument platform, air conditioner, voice entertainment central control large screen (with Bluetooth function, navigation function, radio function, USB and SD card interface, can connect with mobile phone to make and make calls, USB disk media playback function), sun visor, 2kg fire extinguisher, three steps (third level activity)
drive motor	Type	permanent magnet synchronous EM310H46
	Rated/peak power (kW)	315/460
	Rated/peak torque (N.m)	1650/2900Nm
Gearbox	Type	AMT
	Type	Energy type lithium iron phosphate battery
Power battery	Rated capacity (kWh)	350
	Arrangement type	Side
	Recharge time (SOC:20%-100%, 240kW double gun)	≤80min
	Frame	Basic size (mm)
front axle	Specification	9.5T
	Middle and rear axle	Specification
Speed ratio		6.73
suspension system	Balance shaft assembly type	T55
	Number of Leaf Springs	14/14/12
	Rear stabilizer bar (with/without)	with
	Material (steel/aluminum alloy)	Steel
rim	Specification	8.75 reinforced
	Type	Full wire radial tyre
tyre	Specification	12.00R24
	braking system	Type
steering gear	Specification	Integral cycle ball type
	Crawl control	●
Other configurations	ASR drive non-slip	●
	Energy recovery regulation	●
	OTA	●
	Application site (recommendation)	Mine
Typical scenario: mine short inverted transportation, with the characteristics of high power, high load, high passage, high protection, high reliability, high safety, low energy consumption products, meet the requirements of complex working conditions in mining areas. Typical road: unpaved, pothole/soft/compact-dominated, paved road accounts for a small proportion Total vehicle and cargo weight GVW: ≤75 tons Commonly used speed: Full load 20-30km/h (off road) No-load 20-40km/h (off highway) Maximum speed: speed limit ≤100km/h (Thailand regulations, specific speed shall be subject to the actual requirements of mining area)		
Note: X- does not adopt; ○ - Optional (Class C orders); ● - Standard; The above configuration parameters are for reference. The manufacturer reserves the right to change them without prior notice. The right to interpret them is reserved by the manufacturer		

UZBEKISTAN

STRONG POWER AND BETTER DRIVE EXPERIENCE

Higher horse power engine ranges from 400 to 490 horse power, higher efficiency powertrain with strong load capability gives you confidence to overcome tough work conditions everywhere. Comfortable 318 cabin offers better experience for drivers.

ROBUST DESIGN WITH HIGH DURABILITY IN HARSH ENVIRONMENT

Outstanding adaptability ensures stable working in -20 C to 50 C environment with heavy payload, Air intake filter designed for working in dusty area. Reinforced 316mm height, 8mm+8mm thickness chassis frame and offers outstanding durability. Sufficient tests and scientific simulations ensure reliability and trustworthy quality.

INTELLIGENT AND SAFETY

MachineLink+ Terminal allows operators to monitor truck's state and location in real time. This helps operators to improve drive habit in order to reduce fuel consumption. The truck's GPS location can be tracked by managers, which helps to trace the truck's journey or set geofence. Result in safe operation of the trucks.



Uzbekistan Dump vehicle configuration and work condition recommendation			
Product Model		Yuchai Engine	
		SYZ320C-8Y(V)	
		Direct transmission i=5.26	
		ZZX100000449	
Vehicle parameter	Dimension (L×W×H)(mm)	8800×2540×3580	
	Wheel Base(mm)	4000+1400	
	Curb Weight(kg)	16200	
	Full Load Weight(kg)	45000-55000	
	Economic Speed Range (Maximum Gear)	41-56	
	Rated Maximum Speed	71	
Body	Permissible Maximum Speed	82	
	BOX	20m³ (5800*2350*1500mm)	
	Cargo	Rectangle ● U type ○	
Cab	Cab Model	318 cab, Standard Roof with single bed	
	Others	Remote Key, Central Lock, Electric Glass Lifting, air-conditioning Hand Flip ● Electric Flip ○	
Chassis	Engine	Model	YC6MK400-50, Euro V, 10.338L
		Rated power (kW/rpm)	294/1900
		Maximum torque (N.m/rpm)	1900/1100-1500
		Auxiliary braking	Exhaust Brake
		Others	Intake preheating
	Clutch		♠ 430
		Gearbox	12JSD200T-B (Fast), Ratio 15.53-1
		Front axle	Type
	Others		Hand-adjusting arm, waterproof axle
	Drive axle	Type	2×16T i=5.26
		Differential lock	Differential lock between wheels and differential lock between shafts
		Others	Hand-adjusting arm, waterproof axle, Cast steel axle housing, Double reduction
		Tyre	12.00R20 ● 315/80R22.5 ○
	Frame	940-860×316×(8+8)	
	Front suspension	10 leaves (width 80mm, thickness 18mm multiple-leaf spring)	
Rear suspension	12 leaves (width 90mm, thickness 28mm+25mm multiple-leaf spring+ Four horse integrated balance shaft)		
Braking	Pneumatic double circuit drum brake, ABS, KNORR		
Fuel tank	300L ● (aluminum)		
Battery	165Ah		
Optional	Mine tyre	○	
	Tarpaulin system	○	
	360 view	○	
	ASR	○	
	Wear-resistant cargo box	○	
Applicable Scene (Recommend)	Mine/urban foundation trench		
	Scene 1: Typical mine: Coal/copper transportation Typical road: unpaved, pothole/soft/compact dominated, paved road accounts for a small proportion GVW: 45-55t General used speed: Full load 10-30km/h (off highway) Empty load 20-40km/h (off highway) Maximum speed: no typical demand, or ≤70km/h Scene 2: Typical scene: country/city, mend road, Park construction Typical road: non-paved road both loading and unloading sides, accounting for a small proportion, in and out of the compact road, good condition; The middle is paved with asphalt, two-way fast lane GVW: 45-55t General used speed: Full load 10-30km/h (off highway), 20-45km/h (highway) Empty load 20-40km/h (off highway), 30-50km/h (highway) Maximum speed: no typical demand, or ≤70km/h		
Note: X-without; ○ -Optional; ● -Standard ; The above configuration parameters are for reference. The manufacturer reserves the right to change them without prior notice. The right to interpret them is reserved by the manufacture			

Uzbekistan Dump vehicle configuration and work condition recommendation				
Product Model		Deutz Engine		
		SYZ322C-8S(V)	SYZ428C-8S(V)	
		Direct transmission i=5.26	Direct transmission i=5.26	
		ZZX100000447	ZZX100000448	
Vehicle parameter	Dimension (L×W×H)(mm)	9150×2540×3580	11000×2540×3580	
	Wheel Base(mm)	4200+1400	2000+4200+1400	
	Curb Weight(kg)	16900	22600	
	Full Load Weight(kg)	55000-65000	65000-78000	
	Economic Speed Range (Maximum Gear)	37-52	37-52	
	Rated Maximum Speed	71	71	
Body	Permissible Maximum Speed	82	82	
	BOX	22m³ (6200×2350×1500)	28m³ (8000×2350×1500)	
	Cargo		Rectangle	
Cab	Cab Model	318 cab, Standard Roof with single bed		
	Others	Remote Key, Central Lock, Electric Glass Lifting, air-conditioning Hand Flip ● Electric Flip ○		
Chassis	Engine	Model	D12C5-462E0, Euro V, 12.12L	D12C5-490E0, Euro V, 12.12L
		Rated power (kW/rpm)	340/1900	360/1900
		Maximum torque (N.m/rpm)	2200/1000-1400	
		Auxiliary braking	Engine Brake	
		Others	-	
	Clutch		♠ 430	
		Gearbox	12JSDX240T (Fast), Ratio 13.15-1	
		Front axle	Type	9T
	Others		Hand-adjusting arm, waterproof axle	
	Drive axle	Type	2×16T i=5.26	
		Differential lock	Differential lock between wheels and differential lock between shafts	
		Others	Hand-adjusting arm, waterproof axle, Cast steel axle housing, Double reduction	
		Tyre	12.00R20 ● 315/80R22.5 ○	
	Frame	940-860×316×(8+8)		
	Front suspension	10 leaves (width 80mm, thickness 20mm multiple-leaf spring)		
Rear suspension	12 leaves (width 90mm, thickness 30mm+28mm multiple-leaf spring+ Four horse integrated balance shaft)			
Braking	Pneumatic double circuit drum brake, ABS, KNORR			
Fuel tank	400L ● (aluminum)			
Battery	165Ah			
Optional	Mine tyre	○	○	
	Tarpaulin system	○	○	
	360 view	○	○	
	ASR	○	○	
	Wear-resistant cargo box	○	○	
Applicable Scene (Recommend)	Mine/urban foundation trench			
	Scene 1: Typical mine: Coal/copper transportation Typical road: unpaved, pothole/soft/compact dominated, paved road accounts for a small proportion GVW: 55-65t General used speed: Full load 10-30km/h (off highway) Empty load 20-40km/h (off highway) Maximum speed: no typical demand, or ≤70km/h Scene 2: Typical scene: country/city, mend road, Park construction Typical road: non-paved road both loading and unloading sides, accounting for a small proportion, in and out of the compact road, good condition; The middle is paved with asphalt, two-way fast lane GVW: 55-65t General used speed: Full load 10-30km/h (off highway), 20-45km/h (highway) Empty load 20-40km/h (off highway), 30-50km/h (highway) Maximum speed: no typical demand, or ≤70km/h			
Note: X-without; ○ -Optional; ● -Standard ; The above configuration parameters are for reference. The manufacturer reserves the right to change them without prior notice. The right to interpret them is reserved by the manufacture				

MALAYSIA

STRONG POWER AND FAST CLIMBING SPEED

435 horsepower, great climbing ability in highway and construction application. It offers extra trips daily for more profit.

ROBUST AND DERABLE DESIGN

9T front axle, 16T rear axle and 8+8 frame combination provides strong fundation for an urban dump truck.

STRONG CARGO BODY WITH LIGHTWEIGHT DESIGN

With SANY innovation, the cargo is build with strong steel with lighter weight, which offers extra load capacity.



Malaysia			
type		SYZ311C-6S Sany Deutz Engine	
		ZZX200000475	
Vehicle parameters	Dimension (LxWxH)mm	9000×2540×3250	
	Wheel base mm	4600+1400	
	Curb Weight	15t	
	Full Load Weight	50-55t	
	Economic speed range	40-80	
	Rated maximum speed (1900rpm)	90	
	Permissible maximum speed (2200rpm)	110	
cargo	11m³(6000*2300*760mm)	●	
	Rectangular	●	
	U-Type	○	
Cab	Model	318 Standard Roof	
	Other configuration	Single sleeper, wraparound instrument table, air conditioner, radio (with Bluetooth, USB and SD card interface, can connect with mobile phone to make calls, play music), sun visor, 2kg fire extinguisher, three steps	
Chassis Parameter	engine	Model	D12C5-435E1
		brand	Sany Deutz Engine
		Displacement (L)	12.12 Euro V
		Rated power/speed (kW/rpm)	308/1900
		Maximum torque/speed (N.m/rpm)	2106/1000-1400
		Net engine weight (kg)	1150
		Auxiliary braking	In-cylinder braking
		Add blue tank volume (L)	35
	other	Direct injection, water cooling, four stroke, supercharged intercooling, high pressure common rail	
	clutch	♠ 430	
	transmission	Fast 12JSDX240T-A (12.1-0.78)	
	Front axle	7.5T with ABS and waterproof axle	
	Medium axle	Model	16T with ABS and waterproof axle
		Speed ratio	4.77
		Differential lock	Differential lock between wheels and shafts
	Tires and rims	12.00 R20	
	frame	940-860×316×(8+8)	
	Front suspension	10 leafs (width 80mm, thickness 18mm multiple-leaf spring)	
	Rear suspension	12 leafs (width 90mm, thickness 25mm multiple-leaf spring+Four horse integrated balance shaft)	
	brake	Pneumatic double circuit drum brake, ABS	
fuel tank	400L (Aluminum)		
battery	165Ah		
General configuration	Undertank protection	●	
	Headlight and side light guard mesh	●	
	Engine side baffle (body)	●	
	Remove the crank type spare tire support	●	
	Chassis toolbox	●	
Applicable Scenarios (Recommend)		typical scene: city construction foundation pit /sand transportation conditons Typical road: Paved Road, Highway, Minimal Turning Radii Limitation Total weight of vehide and cargo GVW: ≤55 tons Commonly used speed: Full load 30-60km/h (on road) No-load 40-70km/h (on road) Maximum speed: no typical demand, or ≤110km/h	
Note: X-without; ○ -Optional; ● -Standard ; The above configuration parameters are for reference. The manufacturer reserves the right to change them without prior notice. The right to interpret them is reserved by the manufacture			

Malaysia			
type		SYZ415C-8S(R) sany deutz engine (8×4)	
		ZZX200000472	
Vehicle parameters	Dimension (LxWxH) mm	standard	11650×2550×3250 (length of cargo 8550)
	Wheel base mm	standard	2000+5200+1400 (length of cargo8550)
	Curb Weight		18t
	Full Load Weight		55-60t
	Economic speed range		40-80
	Rated maximum speed (1900rpm)		90
	Permissible maximum speed (2200rpm)		110
Cargo	15m³ (8600*2300*760mm)	●	
	13m³ (7600*2300*760mm)	○	
Cargo Type	Rectangular	●	
	U-Type	○	
Cab	Model	318 Standard Roof	
	Other configuration	Single sleeper, wraparound instrument table, air conditioner, radio (with Bluetooth, USB and SD card interface, can connect with mobile phone to make calls, play music), sun visor, 2kg fire extinguisher, three steps	
Chassis Parameters	engine	Model	D12C5-435E1
		brand	Sany Deutz Engine
		Displacement (L)	12.12 (Euro V)
		Rated power/speed (kW/rpm)	308/1900
		Maximum torque/speed (N.m/rpm)	2106/1000-1400
		Idle speed (rpm)	600+50
		Net engine weight (kg)	1150
		Auxiliary braking	In-cylinder braking
	Add blue tank volume (L)	35	
	other	Direct injection, water cooling, four stroke, supercharged intercooling, high pressure common rail	
	clutch	♠ 430	
	transmission	Fast 12JSDX240T-A	
	Front Axle	9T with ABS and Waterproof Axle	
	Middle and Rear axle	Model	16T
		Speed ratio	4.77
		Differential lock	Differential lock between wheels and shafts
	Tires and rims	Model	12.00 R20
frame	frame(mm)	940-860×316×(8+8)	
front suspension	8 pieces (width 90mm, thickness 18mm multi-piece spring + shock absorber)		
rear suspension	12 pieces (width 90mm, thickness 25mm multi-piece spring + four-horse integrated balance shaft)		
brake	Pneumatic double circuit drum brake, ABS		
fuel tank	400L (Aluminum)		
battery	165Ah		
General configuration	Undertank protection	●	
	Headlight and side light guard mesh	●	
	Engine side baffle (body)	●	
	Remove the crank type spare tire support	●	
	Chassis toolbox	●	
Applicable Scenarios (Recommend)		Typical Scene: Urban Construction, Suburban Transfer Typical Road: Paved Road, Highway, Minimal Turning Radii Limitation Designed Gross Vehicle Weight: ≤60t Regular Speed: Full Load 50-80km/h (Highway) Empty Load: 60-90km/h (Heighway) Maximum Speed: Usually ≤110km/h	
Note: X-without; ○ -Optional; ● -Standard; The above configuration parameters are for reference. The manufacturer reserves the right to change them without prior notice. The right to interpret them is reserved by the manufacture			

LATIN AMERICA

CUSTOMIZED DESIGN

To meet the market demand, SANY developed the modulated dump truck with selective engines for various working scenarios. The customizable configurations meet customers' diverse demands.

HIGH-QUALITY CARGO

The Strengthened cargo structure is durable for various working condition. Such design lengthens the lifetime of the cargo, which reduces the cost of maintenance.

DESIGNED FOR TRANSPORTATION

Adequate ground clearance for various working environment, and short wheelbase reduces the limitation of turning radius.

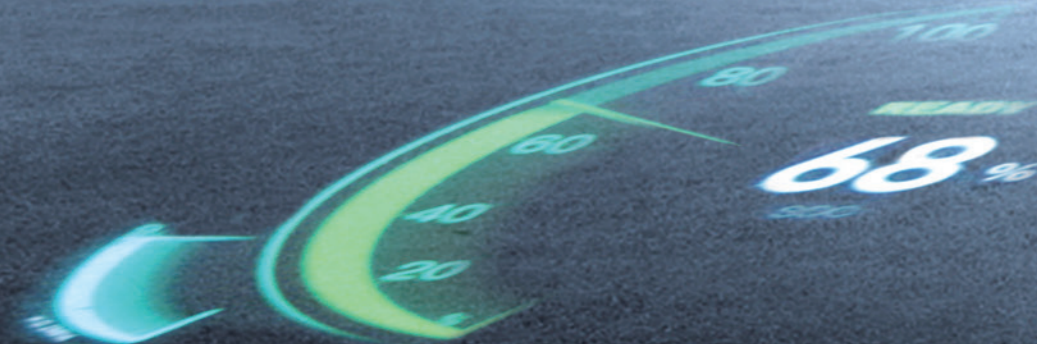


Latin America			
Product Model		SYZ316C-8S Deutz Engine (Main Selling) Standard Model ZZ200000124	
Vehicle parameter	Dimension (LxWxH)(mm)	8600x2540x3250	
	Wheel Base(mm)	4000+1400	
	Curb Weight(kg)	12.4t	
	Full Load Weight(kg)	50T	
	Rated Maximum Speed-1900rpm	30-50	
	Permissible Maximum Speed-2200rpm	80	
Container Size	5600x2350x1200	●	
	5200x2350x1350	○	
	5400x2300x1500	○	
	5400x2300x1200	○	
	U type Cargo/Rectangle Cargo	U type Cargo	
Cab	Cab Model	318 cab, Standard Roof with single bed	
	Others	Remote Key, Central Lock, Electric Glass Lifting	
Chassis	Engine	Model	D09C3-380E0, Deutz, Euro III, 10
		Rated power (kW/rpm)	265/2000
		Maximum torque (N.m/rpm)	1506/1000-1500
		Auxiliary braking	Engine-Brake
	Clutch	12JSD200T-B	
	Gearbox	FAST-12JSD200T-B.Ratio 15.53-1	
	Front axle	Type	7.5T(BEIBEN)
		Others	Self-adjusting arm, ABS, brake pad wear alarm, waterproof axle
	Drive axle	Type	16T(BEIBEN)
		Differential lock	Differential lock between wheels and differential lock between shafts
		Others	Self-adjusting arm, brake pad wear alarm, waterproof axle
	Type	315/80R22.5 ○ 12.00R20 ●	
	Frame	940-860x300x(8+4)	
	Front suspension	8 leafs (width 80mm, thickness 18mm multiple-leaf spring)	
Rear suspension	12 leafs (width 90mm, thickness 28mm+25mm multiple-leaf spring+Four horse integrated balance shaft)		
Breaking	Pneumatic double circuit drum brake, ABS		
Fuel tank	300/400L		
Battery	165Ah		
Cold region configuration	Tank heating, fuel heating, inlet preheating (cold start)	●	
Optional	LCD multimedia screen (body)	○	
	Multifunctional steering wheel	○	
	360 look around	○	
	Integral rearview mirror (body)	○	
	Electric cab lift (body)	○	
	Ignition key integration (body)	○	
Applicable Scene (Recommend)	Urban road construction		
	Typical minemuck road transportation Typical road: non-paved road both loading and unloading sides, accounting for a small proportion, in and out of the compact road, GVW:40-50t General used speed: Full load 30-40km/h (highway) Empty load 50-60km/h (highway) Maximum speed: no typical demand, or ≤80km/h		
Note: X-without; ○ -Optional; ● -Standard; The above configuration parameters are for reference. The manufacturer reserves the right to change them without prior notice. The right to interpret them is reserved by the manufacture			

Latin America					
Product Model		SYZ316C-8S Deutz Engine (Main Selling) Luxury Model ZZ2100000468	SYZ315C-8S Deutz Engine Standard Model	SYZ316C-8R Hino engine ZZX100000444	
Vehicle parameter	Dimension (LxWxH)(mm)	8300x2540x3580	8450x2540x3250	8350x2550x3400	
	Wheel Base(mm)	3800+1400	3800+1400	3775+1440	
	Curb Weight(kg)	16.5t	12.4t	14.5t	
	Full Load Weight(kg)	60T	50T	50T	
	Rated Maximum Speed-1900rpm	30-50	30-50	30-50	
	Permissible Maximum Speed-2200rpm	80	80	80	
Container Size	5600x2350x1200	○	○	○	
	5200x2350x1350	●	○	○	
	5400x2300x1500	○	○	●	
	5400x2300x1200	○	●	○	
	U type Cargo/Rectangle Cargo	Rectangle Cargo	U type Cargo	Rectangle Cargo	
Cab	Cab Model	318 cab, Standard Roof with single bed			
	Others	Remote Key, Central Lock, Electric Glass Lifting			
Chassis	Engine	Model	D12C5-462E0, Deutz, Euro V, 12.12	D09C3-380E0, Deutz, Euro III, 10	J08E-UP, Hino, Euro III, 7.684
		Rated power (kW/rpm)	340/1900	265/2000	222/2500
		Maximum torque (N.m/rpm)	2200/1000-1400	1506/1000-1500	1000/1200-1500
		Auxiliary braking		Engine-Brake	
	Clutch	φ 430	φ 430	φ 430	
	Gearbox	FAST-12JSDX240TA.Ratio 12.10-1	FAST-12JSD200T-B.Ratio 15.53-1	FAST	
	Front axle	Type	9.5T(HANDE)	7.5T(BEIBEN)	7.5T(HANDE)
		Others	Self-adjusting arm, ABS, brake pad wear alarm, waterproof axle		
	Drive axle	Type	16T(HANDE)	16T(BEIBEN)	16T(HANDE)
		Differential lock	Differential lock between wheels and differential lock between shafts		
		Others	Self-adjusting arm, brake pad wear alarm, waterproof axle		
	Type	315/80R22.5 ○ 12.00R20 ●	315/80R22.5 ○ 11.00R18 ●	315/80R22.5 ● 11.00R18 ○	
	Frame	940-860x316x(8+8)	940-860x300x(8+4)	940-860x300x(8+8)	
	Front suspension	10 leafs (width 80mm, thickness 18mm multiple-leaf spring)	8 leafs (width 80mm, thickness 18mm multiple-leaf spring)	10 leafs (width 80mm, thickness 18mm multiple-leaf spring)	
Rear suspension	12 leafs (width 90mm, thickness 28mm+25mm multiple-leaf spring+Four horse integrated balance shaft)	12 leafs (width 90mm, thickness 28mm+25mm multiple-leaf spring+Four horse integrated balance shaft)	12 leafs (width 90mm, thickness 28mm+25mm multiple-leaf spring+Four horse integrated balance shaft)		
Breaking	Pneumatic double circuit drum brake, ABS	Pneumatic double circuit drum brake, ABS	Pneumatic double circuit drum brake, ABS		
Fuel tank	400L	400L	400L		
Battery	180Ah frigestable	165Ah	165Ah		
Cold region configuration	Tank heating, fuel heating, inlet preheating (cold start)	●	●	●	
Optional	LCD multimedia screen (body)	○	○	○	
	Multifunctional steering wheel	○	○	○	
	360 look around	○	○	○	
	Integral rearview mirror (body)	○	○	○	
	Electric cab lift (body)	○	○	○	
	Ignition key integration (body)	○	○	○	
Applicable Scene (Recommend)	Urban road construction		Urban road construction	Urban road construction	
	Typical minemuck road transportation Typical road: non-paved road both loading and unloading sides, accounting for a small proportion, in and out of the compact road, GVW:50-60t General used speed: Full load 30-40km/h (highway) Empty load 50-60km/h (highway) Maximum speed: no typical demand, or ≤80km/h		Typical minemuck road transportation Typical road: non-paved road both loading and unloading sides, accounting for a small proportion, in and out of the compact road, GVW:40-50t General used speed: Full load 30-40km/h (highway) Empty load 50-60km/h (highway) Maximum speed: no typical demand, or ≤80km/h	Typical minemuck road transportation Typical road: non-paved road both loading and unloading sides, accounting for a small proportion, in and out of the compact road, GVW:40-50t General used speed: Full load 30-40km/h (highway) Empty load 50-60km/h (highway) Maximum speed: no typical demand, or ≤80km/h	
Note: X-without; ○ -Optional; ● -Standard; The above configuration parameters are for reference. The manufacturer reserves the right to change them without prior notice. The right to interpret them is reserved by the manufacture					

GREEN, ZERO-EMISSION AND FUTURE-ORIENTED

- New generation of E-dumper has great advantage in the market.
- Market share No.1 in China of 2022.
- Outstanding cost efficiency: scenario like heavy duty downhill empty load uphill (gradient 10%) will have no electrical cost.
- Integrating solution for battery charging/swapping requirements.
- Five years 200,000km warranty for battery system, motor system and vehicle control system.



SERVICE VALUE

Innovation、Excellence、Clients、Cooperation、Respect、Passion、Honesty、Responsibility
Service mission: All for client, create value for customer

SERVICE VISION

Exceed customer expectation and industry standards

SERVICE COMMITMENT

- Reply customer within 15 minutes.
- Reach main service area within 2 hours.
- Solve general problems and provide regular parts within one day.
- Solve customer complaints with two days.
- Solve all issues within 7 days.

SERVICE ADVANTAGE

“Professional service power”: Sany has offices in over 200 countries and regions, with 11 subsidiaries and 35 service points in domestic together. Setting up the parts warehouse can cover the world range, Forming the four in one of parts supply and guarantee system by headquarters warehouse, regional center warehouse, provincial and prefecture-level city, Accommodating 80000 kinds of parts to ensure fully customer service requirements in time. “Professional operation and maintenance system”: Sany has invested tens of million of RMB to build “Sany Customer cloud APP” ,which enable customers to monitor the running status and parameters of the equipment in real time anywhere in the world. In addition, it provides online consultation, community communication, accessories mall, one-click repair, maintenance reservation, product knowledge learning and other value-added service. So the customer can easily enjoy the highest quality of service in any place of the world.

MORE THAN JUST MACHINES

SANY provides equipment you can rely on and trust in any situation. But that’s not all. We then blanket your machine with the kind of support you expect to keep you on the job – no matter where that job takes you. Backed by an industry-leading warranty and supported with local service you can count on, you’ll always be confident in your decision to partner with SANY. Because with SANY, you get more than just machines.

